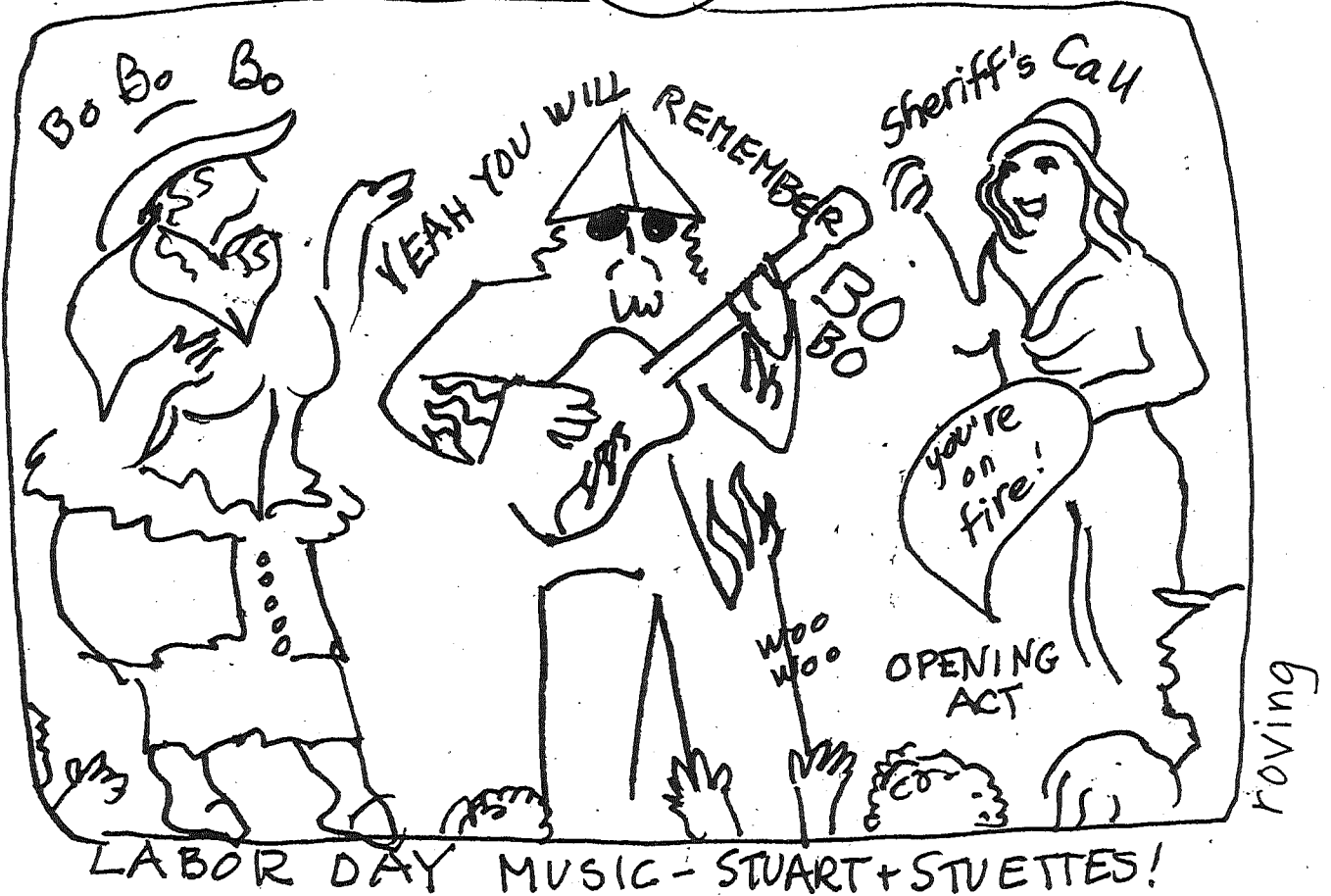


BOLINAS HEARSAY NEWS

FRIDAY, 12TH OF
SEPTEMBER,
2014

50¢



WHAT'S HAPPENING?

Friday, September 12

ELI'S PSDSP

Live grunge rock at Smiley's 9pm. Cover

Saturday September 13

BOLINAS MUSEUM 22ND ANNUAL BENEFIT ART AUCTION & PARTY

JERRY HANNAN BAND

Live Irish rock @ Smiley's, 9pm. Cover.

Sunday September 14,

CELEBRATION OF TOM PATTON'S LIFE

2-4:30 pm @ BCC Simple refreshments. Bring cookies or a poem if you like

ROCK and ROLL POTLUCK

6pm at Gospel Flat Farmstand feat. live music from Jeff Manson with special guests The Domestics from Portland. Donation for Touring band.

Tuesday, September 16

JUST FRIENDS

w/Charlie Docherty @ 19 Broadway, Fairfax

Wednesday, September 17

BCPUD BOARD MEETING

270 Elm Road 7:30pm

INSIDE TODAY'S EXTRA BIG HEARSAY NEWS

→ THE (not so) SECRET
LIFE OF ANTS by Llewellyn
Ludlow

→ AN ONTOLOGY OF
VIOLENCE; an artist
statement from current
Farmstand exhibitor

→ PUTTING RUMOR TO
REST IN THE GRAFFITI
WARS

→ ROCK AND ROLL
POTLUCK INVITATION

→ ORIGINAL POETRY

& MORE...

Sept. 13th

Angela Vernon
Dominique Jackson
Abey Nasra
Bobby Saberi
Judith Elliott (remembered)

Sept. 14th

Malcolm Ponder
Gene Abbott
Gerrund BoJeste
Allan Maxey
Cheryl Stough
Danielle Vincent
Cheryl Batson
Suzie Senk

HAPPY HAPPY BIRTHDAY!!

Sept. 12th

Belle Wood
Karly Zeno
Natasha Gubert
Heidi Adrienne Ford

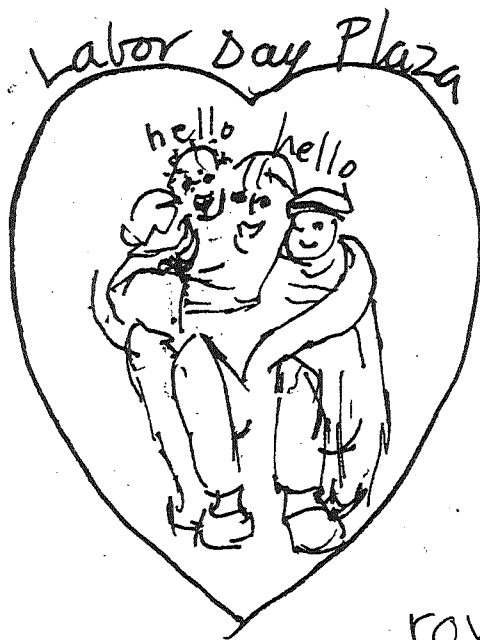
1,000 Year Old Poem

In his hand
 a small book of Zen poetry,
 His strong voice
 reading quietly
 this one poem,
 Brings me into
 the presence
 of Cold Mountain,
 The Spiritual home
 of the Immortals.
 Listening carefully,
 I feel cleansed by the Spring
 that flows from the mouth
 of the poet's rock.

Self,
 and all worldly cares
 are washed away,
 leaving me
 amazed by the wonder
 at heaven and earth's
 great mystery...
 For 1,000 years
 how did this poet's
 treasured words
 remain?
 For me to hear
 this night.....

No longer a body of flesh,
 I become one with the wind
 the glorious, pure, elements
 of nature.

Mary Barror 9/11/14
 mmvbdragonfly@fastmail.fm



COMMUNITY & CULTURAL CENTER
dance palace
 For more information, to volunteer,
 or to join call 415-663-1075
 Save \$ by buying in advance
 Tickets at www.dancepalace.org

**GEOFF HOYLE IN "GEEZER"
 A BENEFIT PERFORMANCE FOR THE
 DANCE PALACE**

From a hysterical riff on life in a nursing home to The Venerable Bede's meditations on the meaning of life, from delightful reminiscences of his youth in England and young manhood in America to ruminations on ageing and mortality, Hoyle brings his irrepressible sense of comedy and trademark physicality, as well as a certain elegiac wistfulness, to this tour-de-force performance about what it is like to grow old. Gala dinner catered by Indian Peach at 6 PM, featuring Marin Sun Farm Meat and local produce, cheese and oysters. Dinner attendees will receive premium first two row seating for the performance. All proceeds to benefit Dance Palace scholarships and programs.
Saturday, September 13, 6 PM, Gala Dinner and Premium Seating for Performance \$100, 8 PM Performance only/ General/Seniors \$40

Elmer H. Madden

3/11/1929 — 8/11/2014

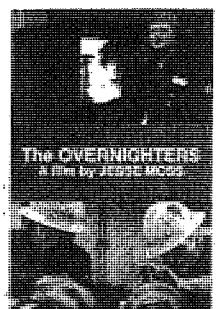
Elmer was Maddy Sobel's loving husband. Elmer worked as a drug counselor in New York for 30 years. Maddy and Elmer were happily married for three-plus years. Maddy is disabled; if you can help, please make a deposit at Wells Fargo to Madelyn Sobel's checking account or call (415) 663.1293 to help.

BALLET CLASSES - ONGOING
 Bolinas Community Center
 Saturdays 10:30 - Noon
 \$60 for five classes and \$15 for drop-in
 Teen/Adults - All levels welcomed
 Instructor: Erika Townsend
bnctownsend@att.net, 209.523.4305

POINT REYES BOOKS

Juliana Birnbaum & Louis Fox authors
 of *Sustainable Revolution: Permaculture in Ecovillages, Urban Farms, and Communities Worldwide*. Slide Presentation
 September 11, 7:30 p.m.,
 PR Presbyterian Church

Poet-orio for Mother Earth with local composer/
 multi-instrumentalist Joycé Kouffman, poets
 Jane Hirshfield & Linda Pastan and Pianist Mary
 Watkins
 Saturday, September 13, 2 p.m.,
 PR Presbyterian Church



2014 Sundance Film Festival
 Special Jury Prize for
 Intuitive Filmmaking
 Friday, September 26, 7:30 p.m.,
 PR Presbyterian Church

For more information on these and other events visit www.ptreyesbooks.com

TODAY'S HEARSAY MADE BY:
 JEFF MANSON: PASTE UP AND PRESS
 KATHLEEN O'NEILL: ADVERTISING
 VAN WARING: COLLATING & DELIVERY
 WITH REASSURANCE FROM YOUNG OTIS

Bolinas Museum

22nd Annual Benefit Art Auction & Party

Saturday September 13th

Join us for the Bolinas Museum's most fun-filled and important fundraiser of the year! Enjoy a great party and lively auction at the romantic Peace Barn in Bolinas. The auction presents outstanding art and special offers from Coastal Marin and Bay Area artists.

The event includes a late afternoon cocktail party, a lively auction presided over by Mark Buell and the post-auction party with delicious food by Pam Ferrari, wine from Sean Thackrey and Nicholson Ranch Winery and live entertainment by Piro Patton and friends. It takes a large volunteer team to make an event like this a success and we would like to thank our volunteer staff and supporters of 77 people from Bolinas and more friends and underwriters from all over the San Francisco Bay Area.

This is our most important fundraiser of the year to help support Bolinas Museum where admission to the five exhibition galleries is free to all visitors, along with most of the courtyard concerts and events. The Museum's archive is the repository for the fascinating history of the town and the Museum's permanent collection represents artists from Coastal Marin and other renowned California artists who have exhibited in the Museum.

The Mission of the Bolinas Museum is to collect, preserve, and exhibit the art and history of Coastal Marin and to present exhibitions and events that provide inspiration and cultural enrichment to residents and visitors. Join us for this wonderful art auction and party, one of the best social events in Coastal Marin!

Tickets available now at the Museum or 868-8809 or see bolinasmuseum.org.

-Submitted by Elia Haworth

LIVE MUSIC AT THE BEACH
Fri., Sat. & Sun Nites SEPTEMBER



Open Mic Sun. 8-12
 DJ Spin Mon. 9-12:30
 Pool Tourney Tue. 8-12
 Karaoke Wed. 8-12:30
 New Bands Thur. 8-1

ROCKIT SCIENCE
 Fri. Sept. 12, 9-1 Eli's PSDSP
 Sat. Sept 13, 9-1, JERRY HANNAN BAND
 Sun, Sept. 14, 8:30-12
OPEN MIC w/Emma Lee
 Mon., Sept. 15, spin, reggae 9-1,
MONDAY NIGHT LIVE
 Tues. Sept. 16, 7-12 Jesse's
GRAND POOL TOURNEY
 Wed., Sept. 17 8:30-12:30, LARRY'S KARAOKE
 Thurs. Sept. 18, 9-1 etherial rock, SKY COUNTRY
 Fri., Sept. 19, 9-1 rock, orig. covers, OVERBITE
 Sat. Sept. 20, 9-1, good ol' rockn' roll, JUST FRIENDS
 Sun. Sept. 21, 8:30-12:30, OPEN MIC w/Charlie
 Mon. Sept. 22, 8:30-1 reggae, spin,
MONDAY NIGHT LIVE!

SMILEY'S SCHOONER SALOON & HOTEL
 41 Wharf Road in Bolinas 415-868-1311



Attention Picklers, crocksters, preppers, selfsufficenteers, artists, beatnicks, poets, foodies, hippy, redneck, townsfolk, or tourist, to the left, right, or tangled in between looking to satisfy the pallet, a do-it-yourself project, or just prepare for the sea level rise.

Get your pickling cucumbers now! While supplies last. Give us a holler at Mann Family Farm 868-9505, if you are in need of a handful or a crock-ful. Fresh from the vine. Thanks, Ed



Bolinas-Stinson Youth Group Starts the New School Year

There was a great group to usher in the new year, meeting in The Den, at the Stinson Beach Community Center. The group meets on Mondays at 4pm. Two high schoolers joined the group: Mikaela and Heidi representing the graduating class, joined by Ely, Finn, July, Weston, Heather, Rose, Ruby, Maittrella, Ella, & Kayla. We had a gratitude circle in the grass sharing how our summer was, how we are in the now, & how we feel about the school year ahead.

We had a gorgeous creamsicle parachute that we all encircled and flew underneath. Little ones visiting the park joined us in our delight of making a huge mushroom and sitting inside.

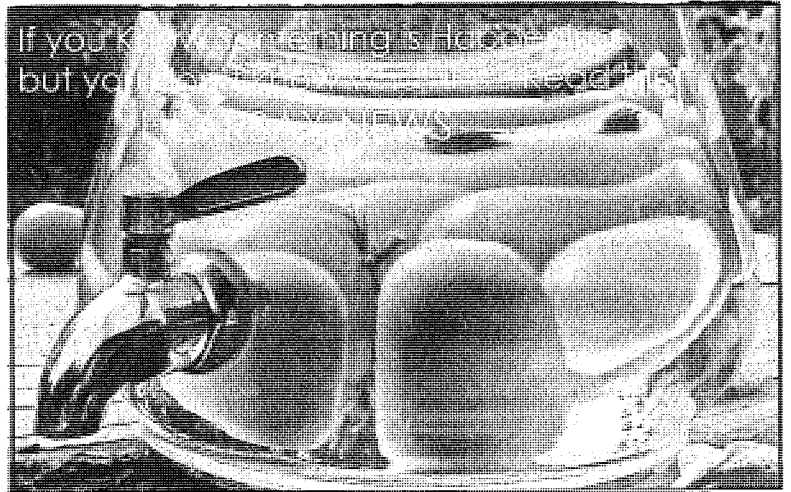
Erika was at the library instead of Kerry. She was helpful and understanding of our boisterous big group. Seemed everyone was very excited to have this one together.

We played G.O.D. on the basketball court and enjoyed a delicious pizza feast under the gazebo.

Went to the beach for council, practicing and understanding what it means to share and listen. Many thanks were shared by all.

For more information about the Bolinas-Stinson Youth Group, see bostinden.wordpress.com

Ian MacLaird & Bridget Bartholome



On Saturday the 13th please attend Joyce Kouffman's
POET-ORIO FOR MOTHER EARTH
An original music/film journey with poetry as the path
 Luminary poets Jane Hirshfield and Linda Pastan will read from their work. Pianist Mary Watkins will head a lyrical jazz trio.
 Toni Littlejohn & Nancy Stein will show paintings. Wonder will abound.
ALL INSPIRED BY OUR LIVING WORLD
Saturday, September 13, 2014 2:00 PM
 in the lovely Presbyterian Church on Hwy 1 just north of downtown Point Reyes
 \$20 advance, \$25 at the door
 seating is limited \$ please make your plans!
 More info & tickets: WWW.JOYCEJAZZ.COM

An Ontology of Everyday Violence

By Ethan Rafal, whose photography exhibit is currently on display at the Gospel Flat Farm Stand

In July of 2006 I was photographing in Darfur, Sudan. I went as an artist, but soon found myself collecting evidence of the government's annihilation of Darfuri villages.

Journalists had largely abandoned the genocide story. American-sponsored peace talks were underway. When these talks failed and bombings resumed I was the only photographer on the ground. Seeing no option, I went chasing bombings.

The government bombed small civilian villages, perhaps to punish rebel sympathizers, perhaps because that's what was left. I was always hours late. One morning the chase ended. Standing in a flowing sea of embers, held still only by the concavity of destroyed homes, the government's Cold-War-era Antonov bombers returned. I stood with an old rebel commander. As the bomber got close, we had nowhere to run. We said nothing, staring at each other. I recall feeling something grotesque. Then I was gone.

Disassociation.

Weeks later I was imprisoned by a rebel faction newly loyal to the Sudanese government. Their leader signed a peace agreement brokered by the Bush administration. My evidence would challenge this so-called peace.

The men holding me were uncertain of their future. Several times the commander took me away from the others to confide. On the last occasion he broke down, crying. He regretted holding me.

It was a charade against chaos. He claimed it was all for the homeless children under him. We returned, drinking the same gasoline-infused water, starving, chain-smoking, he as commander, I as prisoner.

CONT ON P. 8

Broek Hardwood Floors
 We work all over Marin & SF Over 25 Years Experience
 Custom Floors • Installation • Sanding
 • Refinishing • Repairs • Traditional & Green Alternatives
Jan Broek • 868-1188
BroekHardwoodFloors.com
 Lic #661702 • Credit Cards Accepted



Dear Hearsay Reader,

Allow me to paint you a mental picture of a good time forthcoming:

This Sunday 9/14 at 6pm Gospel Flat Farmstand

Sundown, height of the Harvest, Bare Feet kicking up dust, Kids tearing around.

We'll have a potluck with all the epic produce available; I'll make a pot of beans and Mickey will make french friès with his potatoes that we just pulled out of the ground. I'll get a case of beer.

Then, after dinner, I'm going to sing some of my old and new songs, in a Lively, Casual yet Energized manner with my ripping new band featuring Kacey Johansing on drums and Ryan Hett on bass, the same folks from the Labor Day party.

Also, an excellent and fun rock band visiting from Portland, The Domestics, will play some music to which it will also be possible to dance.

There is a provocative art show by Ethan Rafal up which you can check out if you are so inclined. (See article about THAT elsewhere in today's paper)

I would so love to see you all there.

Those details again:

Sunday, Sept. 14th 6pm

Jeff Manson Power Trio

The Domestics (PDX)

FREE but bring a little donation for the touring band's gas money

XO
Jeff M. Friday Ed.



on til
Sunday
Sept 14
Closing
Party
2-3
Live
Auction
starts
at 3

THE BOX SHOW GALLERY ROUTE ONE
Benefit/Exhibition

11101 Hwy One, Point Reyes Station
11am-5pm Every day during the Box Show
415.663.1347 • galleryrouteone.org/box-show

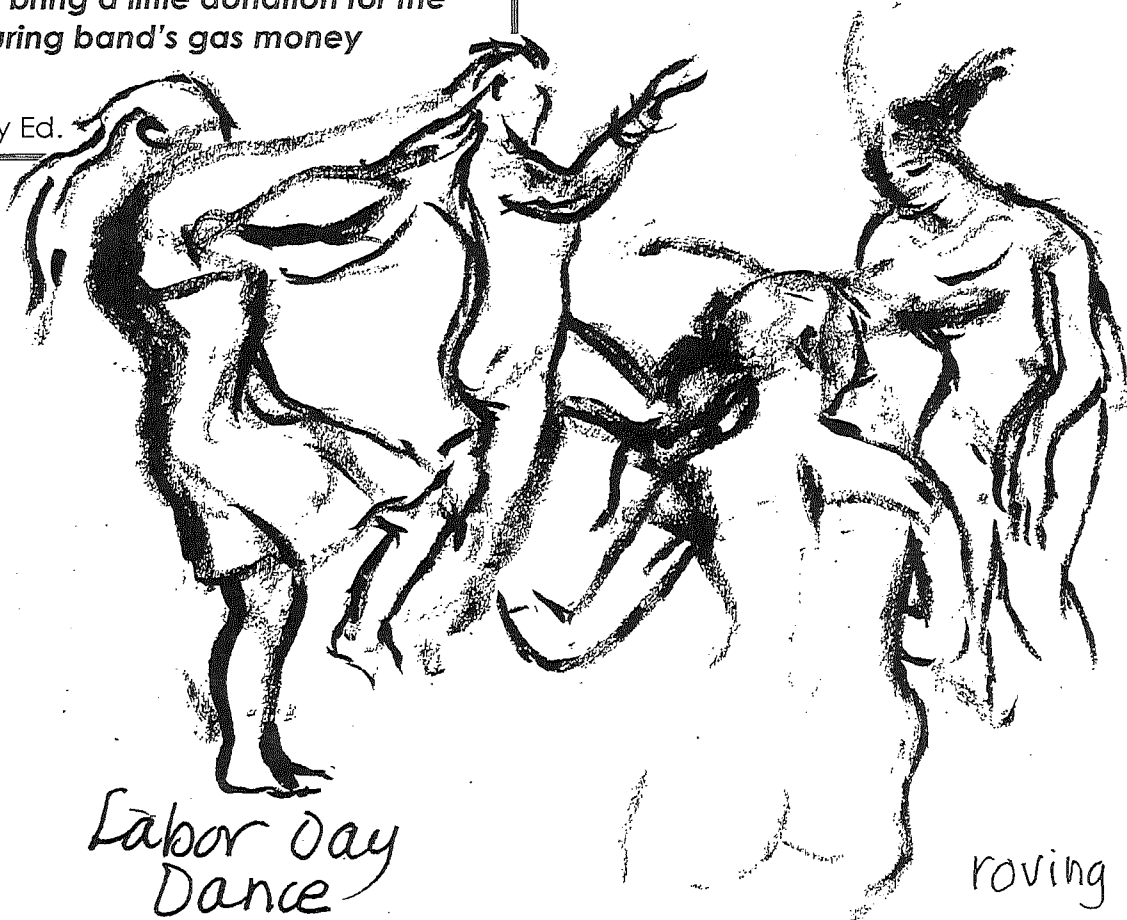
WATCH YOUR BIKE!
BICYCLES HAVE RECENTLY BEEN LIFTED
FROM THE PLAZA. *

* & elsewhere in town

STAR ROUTE FARMSTAND
This Week Featuring

SHELL BEANS SHELL BEANS SHELL BEANS

Friday 12 - 6 PM • Roadside In Our Field



Labor Day Dance

roving

THE (NOT SO SECRET) LIFE OF ANTS. BY L.L.

HI THERE! MY NAME IS BERNIE. I'M LIKE ... THE QUEEN'S NEPHEW! IS THAT NOT JUST A TOTAL KICK? IF ONLY AUNTIE-QUEENY COULD SEE ME NOW! I WONDER IF SHE EVEN KNOWS WHERE I AM. BY THE WAY... WHERE AM I?

WHOA BRO!!! WHAT IS UP WITH THE WEIRD SERIOUS POSTURE?

I WORK FOR THE QUEEN. AND I AM NOT YOUR BRO!

THAT'S SCARY!

ANYWAY, THE QUEEN WANTS YOU TO COME BACK TO THE COLONY AND PROCESS CRUMBS

I BEG TO DIFFER. THE QUEEN - MY AUNT - TOLD ME THAT WE ARE ALL BROTHERS FROM THE SAME MOTHER.

THE QUEEN WANTS ME TO PROCESS CRUMBS? ARE YOU KIDDING ME?

DOES 'AUNTEE' EVEN REMEMBER WHEN (AT THE YOUNG AGE OF FOUR DAYS) I FOUND A SHORT CUT INTO WHOLE FOODS BAKERY? THE CAKE I DISCOVERED?

NO.

TELL THE QUEEN I AM ON VACATION!!!

YOU KNOW I CAN'T DO THAT!

THE QUEEN NEEDS YOU TO BE A PRODUCTIVE, FUNCTIONING MEMBER OF SOCIETY. IT'S PART OF THE PLAN LAID OUT BY OUR ANTCESTORS!

SOME PLAN!

- FORAGE FOR CRUMBS.
- PROCESS FOOD SCRAPS.
- BUILD STUPID ANT HILLS.
- FEED THE QUEEN.
- = BORING !!!

I'M SORRY BUT THAT'S THE WAY IT IS DONE, I DON'T MAKE THE RULES!

SURE THING BUD...BUT RULES ARE MADE TO BE BROKEN!

NO, THEY AREN'T!

YES THEY ARE!

NO, THEY AREN'T

YES THEY ARE.

NO THEY AREN'T

YOU SHOULD DROP THE APOSTROPHE.

HUH?

YOU SHOULD SAY "ARE NOT" INSTEAD OF AREN'T

AND WHY IS THAT?

BECAUSE GRAMMAR FANATICS TELL ME THAT THE USE OF APOSTROPHIES IS NOT NECESSARY, AND AGAINST THE RULES

WAIT! DIDN'T YOU SAY THAT RULES WERE MADE TO BE BROKEN?

YES! EXACTLY!!! THE SAME REASON I AM GOING ON A LOOOONG VACATION!

I'M OVER IT!

Healthy Follow ©

Farm to Face
 Thursday Skin Treatments
 in Bolinas
 by appointment only
 415.858.4353

Amanda Ross
 SKIN CARE

LOCAL & ORGANIC PRODUCTS
 Available at: Las Baulinas Nursery,
 Garden of Eden Apothecary in Pt. Reyes Station,
 and online at www.amandarossskincare.com



ORGANIC FERTILIZERS & PEST CONTROL

SELECT GARDEN SUPPLIES

Cut Flowers • Soil Amendments • Potting Soil
 Seeds • Organic Fertilizers • House Plants

LAS BAULINAS
 NURSERY

Bolinas - 868.0808
 Open 7 Days 10-5

PLANTS FOR THE COASTAL CLIMATE

FRESH CUT FLOWERS

FRUIT TREES • SEEDS



BOLINAS COMMUNITY PUBLIC UTILITY DISTRICT
BCPUD BOX 390 270 ELM ROAD BOLINAS
CALIFORNIA 94924 415 868 1224



A Regular Meeting of the Board of Directors
 September 17, 2014 7:30 p.m.

1. Call to Order.
2. Roll.
3. Manager's Report.
 - Update on the Terrace Avenue Bluff Stabilization Project
 - Update on the BCPUD Chlorine Disinfection Byproduct Reduction Project.
 - Update on the Status of BCPUD's Current Capital Improvement Projects.
 - Inspection of Sewer Force Main.
 - Drainage Project Manager's Report.
4. Community Expression.
5. Coastal Permit and Second Unit Permit – 210 Laurel Road, APN# 191-011-35 (A. Patton for R. Donohugh) (legalize existing second unit, relocate an existing detached accessory structure and construct a new detached accessory structure).
6. Request to Suspend Sewer Connection (L. Ferlinghetti).
7. Request that the BCPUD to Adopt a Resolution of Commitment to Comply with the Brown Act (M. Lewis).
8. West Marin Mosquito Control Coordinating Council: Update on Issues Under Discussion Concerning the Renewal of a Non-Toxic Protocol for West Marin and Request that BCPUD Host a Meeting with the Marin/Sonoma Mosquito Vector & Control District (L. Goldblatt).
9. Memorandum of Understanding between the BCPUD and Mesa Park Concerning the Mesa Park Ballfield Irrigation and Public Restroom Project; Update on Status of Bridge Loan for Costs of Project Not Covered By Advance of Grant Funds; Request from Mesa Park for BCPUD to Advance Payment for Such Costs if Bridge Loan Not Secured.
10. BCPUD Comments on LAFCO's Proposed Update to Adopted Fee Schedule.
11. 2014 Local Agency Biennial Notice – Conflict of Interest Code.
12. Water Supply Update.
13. Volunteer Committee Reports
 - Bolinas Lagoon Advisory Committee:
 - Downtown Parking & Traffic Committee:
 - Resource Recovery:
 - Water Conservation Assistance Committee:
 - West Marin Mosquito Control Coordinating Council:
 - Land Stewardship Committee

14. Other Business
 - a. Board Committee Reports
 - Finance:
 - Legal:
 - Mesa Septic, Flood Control and Roads:
 - Operations:
 - Park and Recreation:
 - Personnel:
 - Sewer:
 - b. Minutes of the August 20, 2014 Regular Meeting.
 - c. Warrants
 - d. Scheduling of Next Meeting(s)
15. Adjournment.

Doctors without Borders Benefit a Success

Thanks to everybody in Bolinas and visitors from elsewhere who bought raffle tickets to assist Ebola victims in west Africa, we raised a little over \$2000 which will be channeled through Drs. without Borders to those people in need.

I heard on the news that there is a terrible shortage of beds, so I am asking that the money be used to buy beds. Mary Nisbet won my painting. And Suzanne Ciani picked up the second prize of a watercolor by Claudia Chapline

20% of the August sales will also be going to west Africa.

Again , thank you all.
 Judy Molyneux



RENOVATIONS + GENERAL CONTRACTING
 BASED IN BOLINAS, SERVING THE ENTIRE BAY AREA

VIDA BUILDING SYSTEMS is a licensed general contracting company serving the greater San Francisco Bay Area.

VIDA specializes in quality renovations, additions and new construction projects.

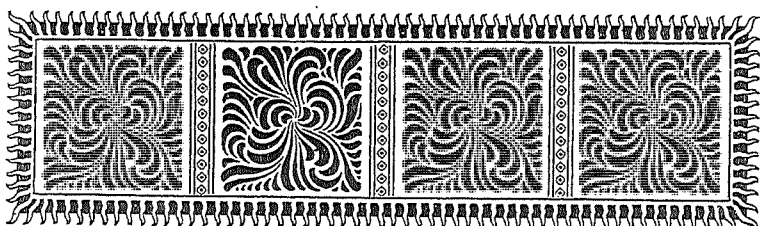
Our sensitivity to style and detail ensures your home comes to life with stunning results, like this Eichler remodel we recently completed in Marin.

BuildWithVida.com
415.868.8881



BUILDING FOR LIFE

License #946778 – fully insured and bonded



CONT. FROM PAGE 4

We were positioned on the edge of the Sahara. A total desert with a dried river bed and intermittent trees where the trucks were hidden, you felt that you were wide open, especially at night when the universe bombarded you with shooting-stars. When the storm came, there was nowhere to hide.

Thunder gave way to lightning inside quickly moving, low clouds. It was everywhere, constant, near, far, near, far, the effect stroboscopic. As the day turned to night it was extremely disorienting. The world would light up, like day, but ugly. Some hid under a tarp hanging from the truck, avoiding the rain. But with the lightning you had nowhere to go. Guns were strewn, useless. Soldiers returned to children. Commanders cradled themselves. You were naked

before a force you didn't have time to name. We would live or die. We would have no say in it. I experienced a euphoric calm. I sensed a tremendous order, and within this a higher agency. If the bombing was submission, obliteration of the self, this was release, from the self to an infinite potential.

My work is an ontology of violence. I am concerned with the individual and collective experience of violence - within and outside the theatre of war - and its constricting effect on human expression. I employ image-based strategies to understand violence, and the ways in which representations of violence inform personal and national mythologies.

In *An Ontology of Everyday Violence*, images are the remains of performance, experiment, but also the opening of a feedback loop between image and social-visual norms. I see the process of making images of violence doubling as one of representation and one of

uncovering a socially constructed object - *readymade* - affording simultaneous engagement with individual experience and collective myth.

For me this process is about coming to terms with war, imprisonment, and the suffocation that follows the experience of violence. For others it has different implications.

Reflecting on experiences of war, imprisonment, physical violence, structural violence, Patriarch, and anxiety about impending environmental collapse, being, and the pursuit of God, my collaborators and I are enacting a lexicon. We may lose, we may fail. We may be silenced. But we will have language, and we will identify our condition. It's suffocation. It's violence. It seems the first step is identifying the problem.

Making these portraits has been described as meditative, transformative, a process of actualization, realization. Whether this is therapeutic as an engagement with a larger condition - confronting the simultaneous experience of being perpetrator / victim, as is our role with environmental collapse - or meditative, as a return to the Caul, the process is not a gesture, metaphor. It is language, in a space that will otherwise remain breathless.

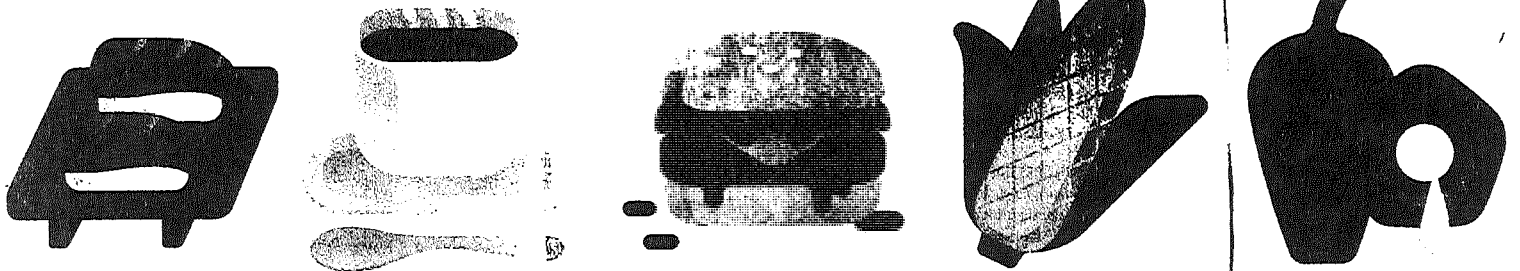
Through direct engagement, this process seeks to understand and confront the physiological, spiritual, and political dimensions of being amidst violence. There are structures to violence, and to the way we experience, interpret, and mediate violence. It is my goal to disrupt these structures: I am concerned equally with finished works as I am with expanding epistemological frameworks.

- ETHAN RAFAL

Five Foods That Are Killing the Planet

Submitted by
Curly Riggs

Spoiler alert: Stop reading now if you can't live without Quarter Pounders, packaged pastries, or expensive sushi. —Avital Andrews



We'll let Pulitzer Prize-winning food critic Jonathan Gold get on his soapbox for this one: "People need to stop eating BLUEFIN TUNA. Period. It'll be difficult because bluefin is uncommonly delicious and tends to be served at high-end sushi bars, where the fashion is to say 'omakase' and submit to the chef's will. But the numbers of these magnificent fish are dropping fast. If we don't stop eating them now, we'll stop in a few years anyway because there won't be any more." Carl Safina, who founded the Blue Ocean Institute, adds, "Because they're long-lived, bluefin populations don't stand up well to heavy fishing pressure—that's why they're so depleted. It's just too sad to eat them. Plus, big fish are high in mercury." To rein in your share of the overfishing disaster currently unfolding—bluefin stock is down by more than 96 percent from unfished levels—order a vegetarian roll instead.

The problem with CONVENTIONAL COFFEE, according to Stephen Madigosky, an environmental science professor at Widener University, "stems from manipulating this shade-loving plant into one that's grown in full sunlight and requires substantial use of herbicides, pesticides, fungicides, and fertilizers." He adds that biologically rich forests are cleared in favor of coffee crops, which devastates tropical species, especially migratory birds. Order organic java to cut out the pesticides, and choose shade-grown to protect rainforest biodiversity. Sustainability consultant Marc Lash points out that how you take your coffee makes a difference: "At Starbucks, a black cup of coffee has a carbon footprint of about 30 grams, whereas a venti caramel latte has one of about 420 grams."

"Cheap burgers are environmental assassins," says Logan Strenchok, Central European University's sustainability officer. Feeding cows to turn them into FACTORY-FARMED BEEF often requires replacing tropical forests with fields of genetically modified corn and soy, which are laced with pesticides that pollute local waters. "It takes 10 to 14 pounds of grain-based feed for a cow to gain 1 pound of flesh," Strenchok says. "Once harvested, that flesh needs to be kept cold, consuming massive amounts of energy." If you must eat a dead cow, eat a grass-fed one, but even then, consider these words from Mary O'Brien, who directs the Utah Forests Program for the Grand Canyon Trust: "In the western U.S., cattle have the single most pervasive impact on public lands, depleting native biodiversity, increasing invasive exotics, diverting water, fouling streams, and baring the soil."

"GENETICALLY MODIFIED CORN violates so many sustainability boundaries—destroying habitats, depleting soils, breaking nutrient cycles, polluting air and water, contaminating native maize varieties, and on and on," says Douglas Fox, a professor of sustainable agriculture at Unity College. Terry Walters, author of *Clean Food* (Sterling Epicure, 2012), says that such monocrops "put our bee population at risk and are creating superpests." She adds that corn's unhealthy offspring, high-fructose corn syrup, "takes a huge toll on the land, requires more pesticides and fertilizers over time as soil is depleted, and requires extensive processing." Lee Greene, who runs heirloom-food company Scrumptious Pantry, adds that relying on genetically modified crops "will continue to dramatically reduce biodiversity and drive historic fruits and vegetables to extinction."

"PALM OIL is one of the largest causes of rainforest destruction," says Laurel Sutherlin, a Rainforest Action Network spokesperson. According to RAN, U.S. palm oil use has ballooned by 500 percent over the past 10 years—it's now in about half of all packaged foods. Christy Wilhelmi, author of *Gardening for Geeks* (Adams Media, 2013), points out that this oil can be produced only in tropical areas—so huge swaths of ancient rainforest in Indonesia and Malaysia have been bulldozed to plant new palms. "Eight million acres have been cleared and burned already," Wilhelmi says, "and as a result, the orangutan is on its way to extinction." In Indonesia, deforestation-related carbon emissions—most of which are from expanding palm plantations—surpass the amount of pollution caused by all U.S. cars, trucks, planes, and ships. To avoid palm oil, read the ingredients on packaged goods, especially cookies, crackers, and instant-noodle soups.

PUTTING RUMOR TO REST
IN THE GRAFITTI WARS

Since the paint-out of the sea-wall grafitti, Judy has been subject to some fallacious--and sometimes ugly--facebook writing. So I'd like to put to rest some of the falsehoods that have been circulated.

I'd also like to look at the indignation that some people felt about that paint-out.

First of all, Judy did not paint out the sea-wall grafitti. Nor did she or her anti-grafitti associates enlist the man who did.

The only painting out of walls that Judy did was several months ago when she painted out the Brighton ramp--a spontaneous solo act (rather courageous, I think) inspired by her desire to see our beach return to the simple, natural, beautiful country beach it used to be.

The big paint-out of the sea-walls was done by Dino Columbo, a Stinson Beach artist who has single-handedly kept Stinson (and Highway One) free of grafitti for many years. (I have no hesitation about naming him, because he is totally open and proud about what he did.)

Judy and friends were completely taken by surprise when they heard what Dino was doing. Though certainly they were more pleased than not--for here, unexpectedly, was a chance for people to see somethings like what the beach looked like before the grafitti "tradition" got going.

About two-thirds of the way into Dino's total paint-out, Judy and friends tried to effect his choice of colors by supplying some paint (Dino had used free surplus paint up to that point), but Dino used very little of their paint. Also, at that point, some of Judy's associates did make a monetary contribution to Dino. After all, he was working like a madman!

The false story that Dino and Judy had painted out the walls got credence--understandably--because an angry worshiper of grafitti art filmed Judy when she spent half an hour painting out a couple little

black scribble-type tags on the vertical metal braces on the Wharf beach sea-wall--after Dino had finished--so that she could take a photo of what the beach could look like without grafitti.

Now, concerning the indignation some people felt about the big paint-out--the feeling that this painting over of art was a sacrilege.

I do understand that for people who love the beach art, this seemed and awful and arrogant act of destruction. They cried out, "Who gave you the authority to destroy other people's art?"

First, it is very much in the grafitti tradition to paint over other people's art--happens all the time. (When Judy painted out the Brighton ramp, Scheherra's dragon--which itself covered other art--had long ago been mostly painted over, and all that was left of the Owein Sanders memorial was one little three-inch-square mention of his name.)

Secondly, and more important: WHEN DID GRAFITTI ARTISTS EVER ASK PERMISSION OF BOLINAS TO LINE THE WHOLE LENGHT OF OUR BEAUTIFUL BEACH WITH GRAFITTI?

When did the town ever vote to allow such a radical transformation of our natural coastline?

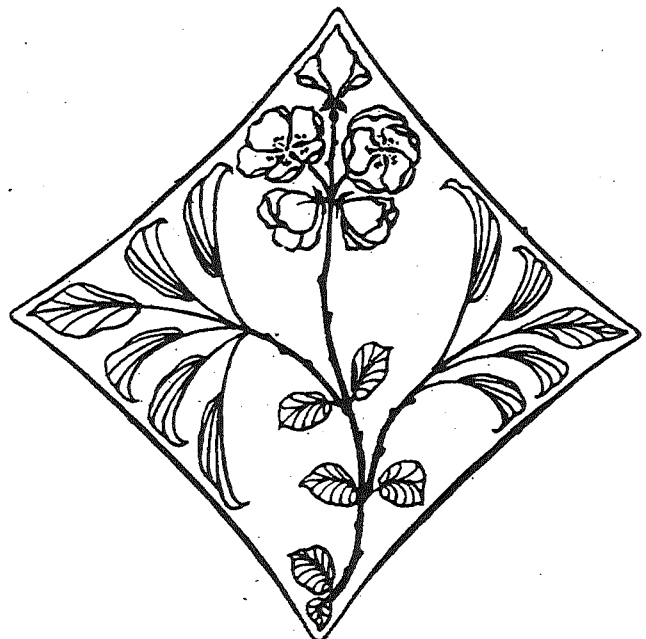
The beach grafitti phenomenon appeared gradually, over 20 years, like a crab being slowly cooked in a pot. If we had suddenly woken up one morning 20 years ago to find our sea-walls totally covered with grafitti, the indignation would have been intense. Especially if it had happened when people still remembered the struggles Bolinas went through to keep our town from being citified, urbanized. Remember, when it was the unwritten law that you didn't advertise Bolinas over the hill?

Now Bolinas is advertised on the internet as a free zone for grafitti--a destination for spray painters from all over the state.

My own opinion is that we should compromise by restricting grafitti to one (small) section of the beach.

Enough--I've gone on long enough. I would just ask that people go down and look at the current grafitti on the beach. If you put aside the attitude that it is sa crosant because it is art, I think you'll find that, although there is some good art there, most of it is just messy and juvenile.

Dale Polissar



HEARSAY NEWS CLASSIFIEDS

Office Hours M. W. F. 9ish to 11ish. Call 868-0138
270 Elm at Maple, Left side of BPUD Building
Ad forms in smaller mail box, slot in door

SERVICES

BRUSH TO MEADOW TRANSFORMATION

Heavy-duty tractor. Mowing / backhoe / roto-tiller / disking / plowing / post-hole drilling. Don Murch -0921

DMX

HANDYMAN: HOME REPAIR, CARPENTRY,

painting,. Hauling too! 27 years experience. Local refs.
Steve Hill -2310

SHX

FIREWOOD • HYDRAULIC LOG-SPLITTING • HAULING

Dump Runs, Cow Manure, Recycling, Humane animal removal
- Skunks, Raccoons & Yellow Jackets. Carl Henry 868-1782

CHX

TREE SERVICE

Fine Trimming • Hedges • Removals • Brush Chipping
Insured #676377 Steve Ryan 868-1584

SRX

SMILEY'S

SCHOONER SALOON & HOTEL

- INTERNET ACCESS • CHECK CASHING
- WESTERN UNION • ATM & CREDIT CARDS
- COLOR COPIER (B&W too)

41 Wharf Rd., Bolinas 415-868-1311

BASIC COMPUTER TRAINING & SETUP

Computer building, Internal cleaning. \$35/hr
415 902-8298

ZM x

ANNOUNCEMENTS

Attention: Bolinas Hardware will be closing at 4:00
This Saturday, Sept. 13th. Please shop early!

Thank you,
Karen Dibblee

The Bolinas Book Exchange

will be

closed for vacation

for two weeks from

Monday, September 15

through

Friday September 26.

Please

do not leave books

during that time;

they will only get

trashed.

Thank you.

-- Michael Rafferty, Prop.

HEALTH AND HEALING

CAREGIVER AVAILABLE

Excellent homecare, cleaner.
Call 868-1782 Anita & William

CH x

June McAdams, RN
Compassionate and Skilled
Hospice Care Home Care
Newborn to Elders
Coastal Marin Only
More than 39 years nursing experience
(415) 868-9052

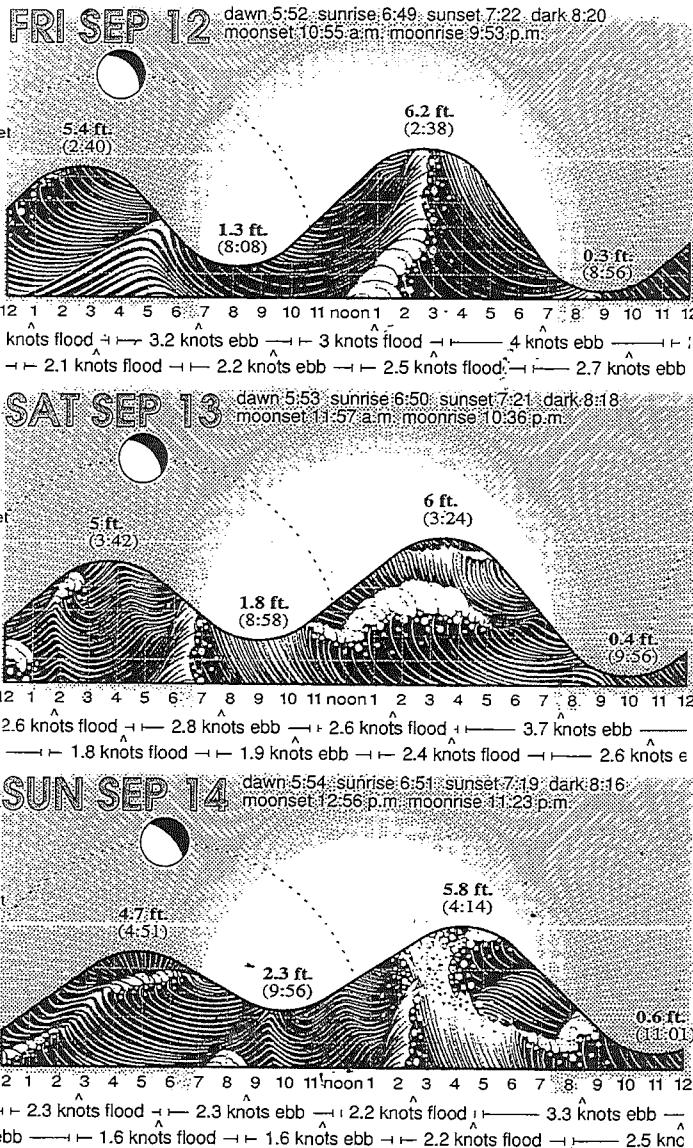
WANTED

AIRPORT? HOWARD DILLON IS STILL DRIVING
with a little help from his friends or could use your car to get there. Still looking for the perfect station wagon-low miles, good condition & cheap. 868-2144

HD x

WILLIAM HENRY NEEDS A GOOD VEHICLE
operational with a reasonable price. 868-1782 or 233-1015

CHx



FOR SALE

MOVING SALE! SAT. & SUN. SEPT. 13 & 14
 • Kitchen stuff • Vinyl Albums • Knick-knacks • Books
 • Collectibles • Copper ware & more... 374 B Sycamore (last
 right on Elm before Agate Beach. 9 am - 4pm

KS 9/12

DRY DRY DRY SEASONED FIREWOOD

Oak, Bay, Eucalyptus - Cut locally
 Gospel Flat Farm 868-0921

DMX

hearsaynews@yahoo.com

Submit articles, ads and drawings by midnight
 Sunday, Tuesday or Thursday for publication
 the next day.

Or to request a link to the password-protected website
 to read online and info on how to subscribe online.

UNIQUITIES

Now that Labor Day is behind us, the Uniquities partners, Barbara MacDonald, June McAdams, Howard Dillon, Leonora De Narié, and Jennie Pfeiffer, would like to say a big "thank you" to the Community for all the excellent support through this busy summer. It has been a pleasure to have so much customer loyalty. We will be starting our fall hours this month: closed on Tuesday's, open all other days from noon to 5:00pm. We have many new items for sale at very reasonable prices, and Barbara will be offering a selection of her fine yarns at deep discounts. We will be starting our 6th year in business this fall, and realize we could not have been here the past 5 years without such enthusiastic community support. 868-8886.

Jenny Pfeiffer



LOST & FOUND

LOST: MY LEFT TEVA SANDAL (BLUE BLACK-size 10) snatched from my door Sunday nite. Did your dog bring it home as a trophy? Larch/Fern -Jutta 686-2549

JR 9/3

FOUND ON ROAD TO AGATE BEACH - A NICE SILVER bike light with attachment that mounts on a bracket that is probably still on the bike!
 Please contact Bolinas Hardware at 868-2900 to claim.

BBH9/5

FOUND ON ELM: PADDLE (FOR STAND-UP PADDLE board) Please contact annyoo@bolinas-stinson.org and describe.

AO9/5

FOUND: A CALICO CAT CAME TO MY HOME on Nymph / Elm- seems very sick. Ilka 0419

8/25 IH

LOST: RING, WHITE GOLD WITH DIAMONDS, sometime in the last couple of days.
 Please call 707-223-5800 if found.

CA 8/20

LOST: I PHONE-WHITE PHONE IN BLACK case with torn flower sticker on back Lost on sewer pond path.
 Please call 868-1186 if found.

8/11

CLASSES



Weekly Schedule

Monday

Bo Babies & Toddlers Open Play Group (free) 10:00 - 2:00 p.m.
 Chiropractic Adjustments w/Colleen 1:00 - 3:00 p.m.
 Modern Dance for Youth w/Lisa T. (9/8-9/29) 3:30-4:30 pm
 Pilates w/Lisa Townsend (pre-register 868-0473) 5:30 - 6:30 p.m.
 Men's Percussion Ensemble W/M.Pinkham 7:00 - 8:30 p.m.

Tuesday

Senior Stretch W/Anna Gottreich 11:00 - 12:00 p.m.
 Pirate Pizza (Pre-order at 328-1066) 4:30 - 7:30 p.m.

Wednesday

Pilates w/Lisa Townsend 8:30 - 10:00 a.m.
 B-Cast theater w/Lisa T. (Starts 9/10/14) 3:30 - 5:00 p.m.
 Biblia en Español 8:00 - 9:30 p.m.

Thursday

USDA food bank 12 noon
 Congolese Dance w/ Sandor 6:00 - 7:30 p.m.

Friday

Pilates Mat Class w/Lisa Townsend 9:00 - 10:00 a.m.
 No Place Like Home (Free Brunch 4th Fri of Month) 10:30 - 11:30 p.m.

Saturday

Diaspora Dance w/Amber Hines (Adults/starts 9/20) 10:00 - 11:45p.m.
 Ballet w/ Erika Townsend 12:00 - 1:30 p.m.

Sunday

Brazilian Jujitsu with Danny 9:30-10:45 a.m.
 Brazilian Dance with Anna 11:00 - 12:15 p.m.
 Sunday CommUnity Night (www.bocenter.org for details)

Check the Library marquee or Calendar in BCC Foyer for special events. For More Info call 868-2128 or visit www.bocenter.org

FREE

DENIM INSULATION.
 CALL 831-15317127

KS 9/8

GRAVENSEIN APPLES-GOOD FOR APPLESAUCE.
 Call Judy @ 0782

JM 9/10

CRABAPPLES LAST YEAR SOMEONE needed some. If you need some now, call 1470

JM 9/10

MECHANICAL HOYER LIFT AND SLING
 Call Diana 868-9249 or 207-841-8139

DL8/29

COMPACT FAX/COPIER IN VERY GOOD condition. 868-2902

JF8/29

FIREWOOD-

Call for appointment: 707-753-0820

DP 8/27

Free Birthday Treat at Bobolicious
 Bring this coupon to receive a treat
 for your Birthday!
 Compliments of Bobolicious
 and The Hearsay News

LOCAL ZONE

Local Business Supports the Bolinas Hearsay News

Sam's House
 38 Wharf Road, Bolinas CA 94924
SENIOR CARE HOME
 Tele/fax 415 868-2866 Facility
 www.samshousemarin.com #216 801 549

People wishing to have a shower (Handicap or able, young or old)
 Call or turn up 10:00 a.m. Monday or by appointment

11 Wharf Road
 VACATION ROOM RENTAL
 (415) 868-1133
 manager@11wharfroad.com
 www.11wharfroad.com

BODYWORK AND SUPPORT FOR PEOPLE LIVING WITH CANCER

Amelia Neffati ONCOLOGY MASSAGE THERAPIST
 CMT# 38184 Ongoing support, also offering Cranial Sacral Therapy and Manual Lymphatic Drainage.
 • Affordable individual care
 Call 415.868.8830 for more information

BOLINAS PEOPLES STORE
Organic, Natural & Local Food
 in'e-luc'ta-ble
Fresh Sandwiches Made Daily
 Hot Soup Tamales
 Open everyday 8:30 am to 6:30 pm 868-1433

BOLINAS GENERAL STORE
 John
 Friendly service in your favorite town

Store Open: 7 days a week 9am - 6:30pm
 Hagen-Das Ice Cream
 Vegetables Fresh Daily
 Beer, Wine & Liquor

Meat Market Open: 7 days a week, 9am to 6:30pm
 Choice Meats Local Beef Fresh Fish
 Sandwiches Made to order
 Phone 868-1441

DON'S LIQUORS
 A Fine Assortment of Domestic & Imported
Wine Beer Liquor
 Open Everyday 11:00 am - 7:00 pm
 18 Brighton Ave. 868-0551

Bilgart Design

Interior design
 Kitchens
 Baths

Faulette Bilgari
 415 868 0108
 bilgardesign.com

BOLINAS BAY HARDWARE & MERCANTILE

Hardware, Lumber, Building & Landscape Supplies
 Local Arts, Gifts, Housewares, Toys & Vintage Quilts

1 Olema-Bolinas Rd. (415) 868-2900 Mon-Fri 8-5:30, Weekends 9-5

natural landscapes
 lea earnheart & associates
 +15.868.9330
 po box 1002 bolinas 94924
 learnheart@sbcglobal.net
invite the wild into your garden

VISUAL SCAPES
 STONEMWORK ~ LANDSCAPING ~ PONDS
 DESIGN, INSTALLATION & MAINTENANCE

RALPH "CHIP" WOOD
 CELL: 517-2356 HOME: 868-2043
 CHIP@VISUALSCAPES.COM
 WWW.VISUALSCAPES.COM LIC C27 711776

MALCOLM PONDER'S WEST MARIN TAX SERVICE
Specializing in Small Business and Back Tax Returns

3 Ocean Parkway, Bolinas, California 94924
 Tel (415) 868-1854 Fax (415) 868-1855

Balancing Act
 BOOKKEEPING PLUS
 Christine Cunha
 Owner

Full-Charge Bookkeeping, Payroll, Year-end Prep, Plus
 Confidentiality assured (415) 868-2700
 bringing order to your financial world

Chameleon
NEW & Recycled Clothing & Accessories
 Women Men Children
Check out: 50% off Rack Regular Sales

Hours: Friday, Saturday & Sunday 2-6pm 868-9996

BOLINAS SURF SHOP
 Est. 1962
 Specializing in no-nonsense cotton clothing for our coastal environment.
 The largest selection of sweats, tops and bottoms, on the north coast. Silk screens produced on the premises with your designs at reasonable prices.

Wed-Sun 11-4 868-1935

WILDLIFE GALLERY & STUDIO
 Bird & Wildlife Art by Keith Hansen.
 Originals, prints, books, note cards, stationery, and more. Commissions.
 Saturdays & Sundays, Noon-6pm and by appointment.
 868-0402

CAMP HAWK
SMALL DOG BOARDING & DAY CARE
 Organic Meals & Treats Home Atmosphere
 Hawk Weston
 Bolinas 415 868-1309