

THE WEDNESDAY

THE HEARSAY

Wednesday December 24, 2014

← Bolinas 22 spujog →



WHAT'S HAPPENING?

Wednesday, December 24

ST AIDAN'S CHRISTMAS EVE SERVICE
Brighton Rd, 5:30pm. Carols, music, all are welcome.
CANDLELIGHT SERVICE Carols, readings & a brief meditation. Stinson Beach Community Center, 7pm & Calvary Presbyterian Church, 9pm.

Thursday, December 25

CHRISTMAS HOLIDAY Offices/businesses closed.
WINTER CELEBRATION POTLUCK
Doors open 12noon, food at 1pm, Community Center. Bring a dish to share. For info/to volunteer: 264-5541

Friday, December 26

ELI'S PSPSD Live music @ Smiley's, 9pm. Cover.

Saturday, December 27

DON'S PARTY Honor-the-proprietor festivities @ Smiley's, 9pm-1am

Sunday, December 28

DALE POLISSAR TRIO w/Bart Hopkin; clarinet/guitar jazz @ Panama Hotel, San Rafael, 7-10pm

Tuesday, December 30

BARDO PARTY Celebrating Ponderosa Pine at the Community Center, 4:30pm

Wednesday, December 31

ASTEROID #4 New year's bash @ Smiley's, 9pm.
MAD MEN THEMED BALL 50's/60's/70's apparel favored; music by Royal Jelly Jive, treats by Rebecca Trivelpiece; @ Community Center, 8:30pm doors, \$40advance/\$45door. Orders: Molli@sbpevents.com.

Thursday, January 1, 2015

NEW YEARS DAY HOLIDAY

HEARSAY ANONYMOUS HOLIDAY SURVEY

(Asked this morning Downtown and at Hearsay Corporate Headquarters)

Q: DOES SANTA SURF?

A: Of course, Yes, Definitely, Of course, I sure hope so, Longboarder, No, He sleds, Yeah yeah yeah, Yes - slowly, Yes of course, Oh yah, We have video evidence, I saw him in the Hearsay, He used to, Part-time, In the Southern hemisphere only, On waves, or on the internet?, Of course, Of course, Duh, (grumble), (glare), (guffaw), (long response in espanol not translated).

-Steve Heilig

Solstice 2014 -so what wetter wet

j Zeno

wet bushes trees gutters
wet shoes windows cars bricks beaches
wet streets lights doors dogs foreheads cliffs

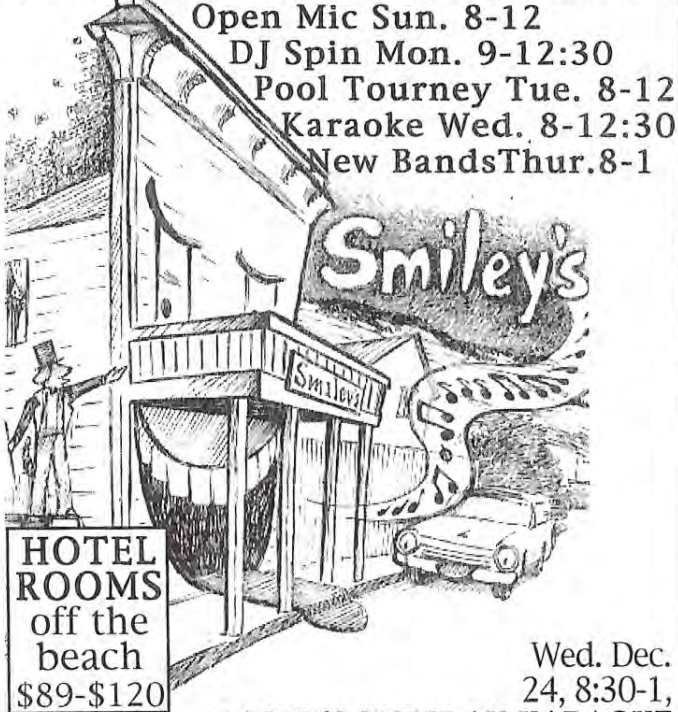
wet people and wheelbarrows walking
Mesa parking puddles wet
wet but not that wet

not yet soggy Palomarin drizzle
bike ride mud grey brown green somehow
enchanted as the low tide egret

splashes wet mild wild west marin winter
nothing like last December's
parched brown fields

here wet green sirens pulse
slowly drying out for sunday
warmer than average drizzly christmas

LIVE MUSIC AT THE BEACH
Fri., Sat. & Sun Nites December



Open Mic Sun. 8-12
 DJ Spin Mon. 9-12:30
 Pool Tourney Tue. 8-12
 Karaoke Wed. 8-12:30
 New Bands Thur. 8-1

Wed. Dec. 24, 8:30-1,

LARRY'S HOLIDAY KARAOKE

Thurs. Dec. 25, 9-1, **CHRISTMAS DAY**
 Fri. Dec. 26, 9-1 Eli's **EMILY & ELI**
 Sat. Dec. 27, 9-1f, **PARTY TO DON**
 Sun. Dec. 28, 8-12, **OPEN MIC w/Eli**
 Mon. Dec. 29, 8:30-1 reggae, spin,
MONDAY NIGHT LIVE!

Tue. Dec. 30, 7-12 Jesse's
GRAND POOL TOURNEY

Wed. Dec. 31, 7-9, **MIDNIGHT ON THE WATER**
 Irish Birthday Party;
9:30-1 NEW YEARS EVE ASTROID # 4

SMILEY'S SCHOONER SALOON & HOTEL
 41 Wharf Road in Bolinas 415-868-1311

BOLINAS HARDWARE WILL BE CLOSING AT 4 PM ON CHRISTMAS EVE!
PLEASE SHOP EARLY...
We'll be open again Fri. Dec 26th

STAR ROUTE FARMSTAND
This Week Featuring

Lots of greens
 and other good things!!!!

Friday 12 - 5 PM • Roadside In Our Field

TODAY'S HEARSAY brought to you by Steve Heilig, June McAdams, Jennie Pfeiffer, and FOUR dogs, plus everybody who is a reporter!

Saturday, January 3

BARDO PARTY Celebrating Michael Guilkey, at Stinson Beach Community Center

Tuesday, January 6

SPECIAL COMMUNITY MEETING w/ reps of Marin/Sonoma Mosquito & Vector Control District regarding very low toxic protocol, Firehouse, 7pm

Wednesday, January 7

Dennis McNally: Highway 61: The Long Strange Trip of American Music. Commonweal, 2-4PM

Winter Celebration Lunch December 25

Donations have been coming in steadily. We still need volunteers to set up tables, tablecloths and place settings. Can someone volunteer to bring wood, kindling, paper and make the fire?

Some kitchen help will be necessary. And, of course, folks to help shut it all down.

If you have special food needs like Vegan, Veegan, or gluten intolerant plan on bringing what suits your fancy and make enough to share and please feel free to label your dish.

I will be available in the kitchen of the Community Center 11 ish on Wednesday and will be cooking and preparing most of the day. Hopefully we will have everything mostly set up by Wed. afternoon.

On Thursday, the doors will open around 12 with snacks. Major food will come out about 1pm.

Remember the stores will be closed on Thurs. so buy what you want to bring before that. If you wish alcohol- bring it.

Hope to see you there. Looks like it won't rain. For questions or to volunteer you can call:

Jody Angel (415-264-5541)

MIGUEL BUSTAMANTE DENTAL CORPORATION

24 WHARF RD. BOLINAS
 415 868 0911



Ponderosa Pine's Bardo Party and Memorial will be at the Bolinas Community Center on Tuesday December 30, 4:30 pm. It will be a potluck and there will be music. Please let friends who live outside Bolinas know about Pine's party.

Penny Van Dyk

...a socially-acknowledged nature-loving town because to like to drink the water out of the lakes to like to eat the blueberries to like the bears is not hatred to hotels and motor boats. Dakar. Temporary and way to save life. boats and forest (airplanes to go over the ocean) and to make it beautiful.

Winter Solstice 2014

A note to those who love the Arts and those who produce it -

I wanted to give an update to those who are interested in BQ's double CD and on line adventure. I especially want to give a general thank you to our town for supporting a local's music project.

I was very moved by your collective generosity to help the process of releasing an album. Though I have been recording independently for the past 12 years, the music has been essentially 'just sitting there' unproduced. I am deeply grateful for the opportunity to release my classical improvisations, a genre not often seen in the classical world of music.

From dollar bills to twenties & checks of \$20.00 to \$200.00 + another angel check for \$500.00 has moved the project along well. Phase I is complete - The recordings, cover art work, liner notes and editing.

For those who are interested, here is a general time line: When the recording engineer is finished 'polishing' the sound, production of the CD will be printed in early 2015 - Phase II. There will also be an on-line presence for the savvy internet crowd - Phase III also includes a modest publicity campaign with CD's sent for reviews in the traditional media of music magazines and art sections of newspapers.

Meanwhile, I'm house-sitting in Larkspur, taking music work in both San Francisco and East Marin. 'Hope you're all having a grand holiday. I will never forget the profound practical and spiritual uplift that I received from our community.

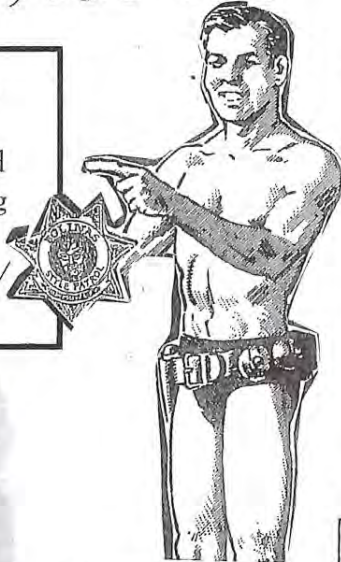
Bill Quist - Box 233, Stinson Beach, CA 94970 - 0233

Bill Quist

cell: (510) 323-6210

OUR DEAR SERITA BASILIO LEWIS had heart surgery and 2 subsequent hospitalizations and is currently unable to work. Please donate to this fund for her if you can. Emma Lee has been coordinating her care and set this up for her:

<http://www.themmaleeproject.com/healinghearts/>
- Kristina Amoroso



HAPPY HAPPY BIRTHDAY!!!

December 24: Freda Weitzer
Elijah McClellan
Steviana Dunn
Sierra Dierks
Ebie Kane

December 25: Bob Wall
Christina Di Grazia

December 26: Brett Docherty
Cecily Gonzales
Glenn Stover
Chuck Hall
Sebastien Do

December 27: Meg Cain
Danielle Katz

December 28: Peter Blank
Tara Horvath
Skyla Stover
Sage Appel
Michael Rafferty
Alison Bristow
Jason Glavis

Welcome to the Christmas Eve Candlelight Services of Stinson Beach Community Church and Calvary Presbyterian Church in Bolinas.

Traditional carols, readings, and a brief meditation by Pastor Bob Grove.

Stinson Beach Candlelight service is at 7 pm at 32 Belvedere Avenue (behind the fire station). (Sunday worship 9:30 am)

Calvary Presbyterian Church in Bolinas service is at 9 pm. The church is located on the corner of Brighton and Wharf. (Sunday worship 11:15 am)



THE REDWOOD COAST REVIEW

You think graffiti is a modern urban scourge? In the Roman towns of Pompei and Herculaneum, buried by a volcanic eruption in CE 79, nineteenth-century excavators found more than 11,000 items of graffiti on the plaster walls. Apparently, people commonly wrote on their walls and the walls of friends, inside the house as well as outside. Messages contained political endorsements, petty gossip, arrangements to meet at a certain place and time, advertisements of rooms for rent. Found in Pompei:

*On April 19 I made bread.
I won 8,552 denari by gaming—fair play!
Atimetus got me pregnant.*



Michael Short / The Chronicle

Attorney J. Tony Serra explains missing teeth.

"O to confront night, storms, hunger, ridicule, accidents, rebuffs, as the trees and animals do."

—WALT WHITMAN, "Me Imperturbe," Leaves of Grass

And it never failed that during the dry years the people forgot about the rich years, and during the wet years they lost all memory of the dry years. It was always that way.

John Steinbeck



Balancing Act
BOOKKEEPING PLUS

Christine Cunha, Owner
415.868.2700

- Full-Charge Bookkeeping
- Payroll
- Year-End Prep
- Mail Service
- Plus More...

Confidentiality Assured

48 WHARF ROAD, 2ND FLOOR, BOLINAS

bringing order to your financial world

10 NEWS

Briefing

The history of the Christmas present

Every year, Americans give an average of 24 Christmas gifts per person, with a total value of \$65 billion. Why?

How did the custom get started?

Christians see gift giving as a symbolic homage to the Three Wise Men's tributes to the baby Jesus. In the New Testament, the Magi are described as honoring the newborn Savior with valuable gifts of gold, frankincense, and myrrh. But gift giving this time of year dates to an even older tradition. Pagans in Europe and the Middle East gave presents at several winter festivals, including Saturnalia, a raucous Roman festival in honor of Saturn, god of agriculture, which began on Dec. 17. During this weeklong holiday in the cold, dark dead of winter, pagans would lift their spirits by drinking to excess and giving one another gifts, such as pottery figurines, edible treats like fruit and nuts, and festive candles. Revelers greeted one another with a joyful "Io Saturnalia!"—the ancient Roman equivalent of "Merry Christmas!"



Our Pilgrim ancestors would disapprove.

What happened to Saturnalia?

Early Christian leaders phased it out. They considered it their religious duty to eradicate the existing pagan culture, but knew that dumping the beloved festival would cause a backlash. So in the 4th century, they created a rival festival to mark Jesus' birth: Christmas. The Bible doesn't explicitly state the date on which Jesus was born, and many theologians place his birth in the spring. But church leaders pushed the date back a few months to Dec. 25 and borrowed some Saturnalia rituals for their own festival to keep the public happy. "If Christianity moves Christmas into December, you can then fade out these other festivals," said archaeologist Sam Moorhead. "You can attempt to move on as if nothing has happened." The festival quickly spread across the Christian world, but some pious believers refused to join in the holiday cheer.

Who were these Scrooges?

Our Pilgrim forefathers. Although today's commercialized Christmas is considered distinctly American, the festival was banned in the nation's earliest days. New England's Puritan leaders considered it a pagan or papist abomination, and any citizen found celebrating around Dec. 25 would be sternly reprimanded. But when Christmas celebrations became legal in the 1680s, gift giving boomed. Rural Americans carved wooden toys and made pieces of needlework in the agricultural off-season to give to family members and neighbors. The Industrial Revolution saw those handmade items replaced with mass-manufactured trinkets and toys. By 1867, the holiday present industry was healthy enough for Macy's in New York City to keep its doors open until midnight on Christmas Eve for the first time.

Santa: The evolution of a gift giver

Santa Claus has undergone many transformations over the centuries. The jolly rotund gent started out as St. Nicholas of Myra, a real-life, 4th-century Byzantine monk who handed out bags of money to the poor. St. Nicholas was introduced to the U.S. in the early 1800s, and quickly mutated into a "right jolly old elf" thanks to the 1823 poem "A Visit From St. Nicholas," commonly known as "'Twas the Night Before Christmas." By 1890, children could meet live "Santas" at department stores—the new name having been taken from the Dutch version of Saint Nicholas, Sinterklaas. In the 1930s, Santa's bearded face was strewn over advertisements for Coca-Cola, solidifying his status as Yuletide's main man. These days, Santa is undergoing a new, politically correct transformation: Worried that his obesity sets the wrong impression, some greeting card companies have started to feature a leaner, healthier Santa on their Christmas cards.

Did everyone get in the spirit?

Not exactly. By 1904, one writer in *Harper's Bazaar* was already lamenting the rampant commercialism of the day. "Twenty-five years ago, Christmas was not the burden that it is now," wrote Margaret Deland. "There was less haggling and weighing, less quid pro quo, less fatigue of body, less wearing of soul; and, most of all, there was less loading up with trash." Such complaints prompted the creation of organizations like SPUG, the Society for the Prevention of Useless Giving, whose members included Anne Morgan, the daughter of banker J.P.

Morgan, and former President Theodore Roosevelt. But retailers were unabashed. The ultimate gift giver, Santa, started appearing in advertisements, and the dreaded "Christmas creep" began, with stores advertising their Christmas wares earlier each year. For toy makers and sellers, the holiday season now begins in February.

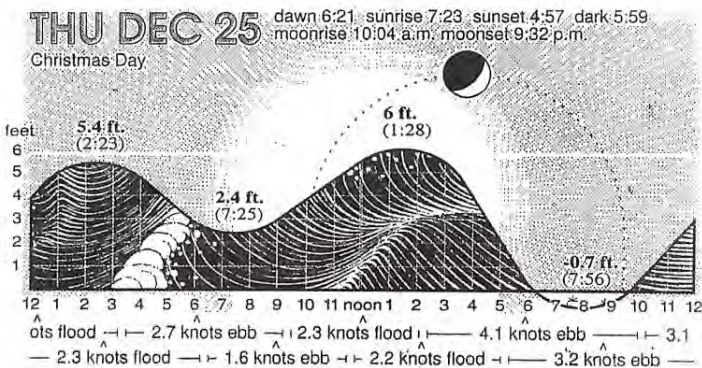
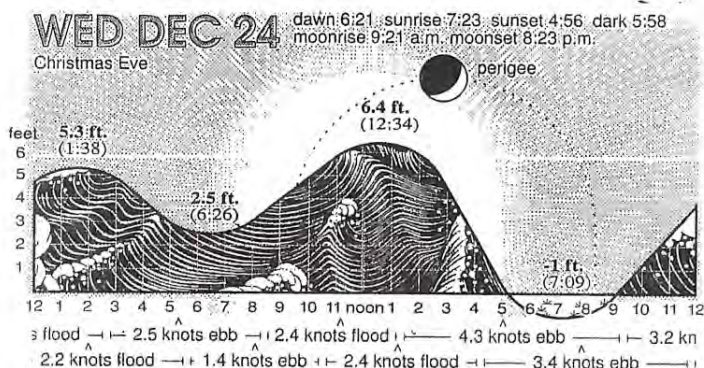
Why February?

That's when tens of thousands of toy industry representatives gather at New York City's annual American International Toy Fair, where they try to figure out which toy will top children's wish lists 10 months later. Beanie Babies made their public debut at the fair in 1993, and the best-selling Furby electronic pet first appeared there in 1998. This year's must-have toy is Disney's \$119 Frozen Castle and Ice Palace Playset, which has already sold out in much of the country and is going for more than \$400 on eBay. With children's toys selling at such high prices, it's perhaps no surprise that the average American is expected to spend \$720 on gifts this year, according to the National Retail Federation.

Isn't that a bit excessive?

Scroogenomics author Joel Waldfogel certainly thinks so. He's lobbied for Americans to abandon Christmas gift giving, which he calls an "orgy of wealth destruction." Waldfogel notes that one-third of holiday spending still isn't paid off two months after Christmas. Worse, most of us don't even like many of the presents we receive. The "deadweight loss" of sweaters never worn and books never read equates to about 18 percent of Christmas spending—a staggering \$12 billion. Present buying may boost the economy, but Waldfogel argues that "if the spending we engage in doesn't produce any satisfaction, then it's hardly a measure of well-being." Worse, he contends, it goes against the very spirit of Christmas. Isn't it supposed to be the thought that counts? "The thought," he says, "doesn't need to be communicated with a lot of money."

THE WEEK December 26, 2014



TNS The New School at COMMONWEAL

Home About Resources Donate Find Us

Search

Audio & Video Library Events



Dennis McNally, PhD

The Long, Strange Trip of American Music, Race, and Freedom

Join TNS Host Steve Heilig for a conversation with Dennis McNally—historian, author, and longtime publicist for the Grateful Dead.

Read Steve's interview with Dennis in the November issue of the Pacific Sun.

Wednesday, January 7 2:00 pm - 4:00 pm

Reserve Seats

Commonweal Free, donations accepted gratefully RSVPs requested

Like 18 Tweet 2



Dennis McNally, PhD

Dennis was born to an Army counter-intelligence operative and a legal secretary in 1949 at Fort Meade, Maryland. He holds a doctoral degree in history from the University of Massachusetts and has written about Kerouac and the Beats for many scholarly journals. He is perhaps best known as the longtime publicist for the Grateful Dead. His first book, Desolate Angel: Jack Kerouac, the Beat Generation and America, so impressed Jerry Garcia that he was hired for the job with no relevant experience. Years later, his second book, A Long Strange Trip: The Inside History of the Grateful Dead, became the definitive band biography. His new book is On Highway 61: Race and the Evolution of Cultural Freedom. About this one, he says "Why did America turn itself inside out in the 1960s, get so nuts that the culture wars that started then are still being fought in 2014? One of the major reasons was the long relationship of white (mostly young) people and black culture (mostly music), going back from minstrelsy (the 1840s) and on up to the 1960s, where you can see it revealed in the music of Bob Dylan." And many others, for that matter.

Photo credits: top, Liz Hafalia; bottom, Susana Millman

Upcoming Events

Other Events

More TNS programming on its way, check back for updates

Dennis McNally, PhD The Long, Strange Trip of American Music, Race, and Freedom Wednesday, January 7 2:00 PM to 4:00 PM Free; donations accepted gratefully

Patricia Berry, PhD Echo's Subtle Body: Contributions to an Archetypal Psychology Friday, January 16 10:00 AM to 3:30 PM Free; donations accepted gratefully

Nate Hinerman, PhD Ending the War on Death. Improving Care for Dying Patients and those Who Will Be Wednesday, January 21 3:00 PM to 5:00 PM Free; donations accepted gratefully

Lewis Samuels Making Waves on Both Sea and Land Wednesday, February 18 3:00 PM to 5:00 PM Free; donations accepted gratefully



dance palace

P.O. BOX 217 503 B STREET POINT REYES STATION, CA 94956

COMMUNITY CHRISTMAS EVE CANDLE LIGHTING & CAROLS SERVICE

Wednesday, December 24, 5:15 PM Free

COMMUNITY CHRISTMAS EVE CANDLE LIGHTING & CAROLS SERVICE

Voices and Strings: Songs From the Book of Hours

Sunday, January 4, 4:00 PM \$15 adults, \$10 seniors and students; kids free

An intensely rich interweaving of voices, cello and piano, Juliana and Lia Kohl illuminate the poetry of Rainer Maria Rilke's Book of Hours. The Book of Hours, called by Rilke's biographer "one of the masterworks of modern German poetry" is presented as a single poem sequence divided into three parts.

Smartphone, iPad, and Tablet Movie Making Made Easy

A helpful and fun workshop in West Marin

Thursday, January 8, 1:00 PM

FEE: \$100 - which includes a handout covering all the techniques, and a workshop bonus hour for participants who have more questions. Bring-a-friend, you will both get a 25% discount

This practical and entertaining 3-hour session covers planning, shooting, and editing. Specifically you will learn how to:

- * Use simple techniques for composing pictures like a pro.
* Professional lighting techniques using available light.
* How to record professional quality sound.
* Practice three simple editing techniques that will elevate the quality of any video



BOLINAS: At 9:07 p.m. someone asked for a welfare check on a 12-foot aluminum skiff.

WEDNESDAY, DECEMBER 24, 2014

Sunday

57 41 Partly sunny Wind: NNW 3-6 mph

Saturday

57 39 More sun than clouds Wind: NE 3-6 mph

Friday

57 39 Plenty of sun Wind: N 4-8 mph

Thursday

57 41 Intervals of clouds and sun Wind: NNW 7-14 mph

Today

Some sun, then turning cloudy today; breezy in the afternoon with a little rain late in the afternoon. Winds west-southwest 10-20 mph. Rather cloudy tonight.

58 42 Wind: WSW 8-16 mph

WEATHER MARIN.IJ.COM



a COMMONWEAL program www.commonweal.org

Audio & Video Library Events About

HAPPY HOLIDAYS/NEW YEAR FROM THE HEARSAY-ERS!



BOLINAS: At 11:07 a.m. someone reported seeing a child of 8 or 10 years driving down Mesa Road in a large white box truck.

RAISING BEEF IS GOOD FOR THE EARTH

Despite environmentalists' worries, cattle don't guzzle water or cause hunger—and they can help to fight climate change

BY NICOLETTE HAHN NIMMAN

PEOPLE WHO advocate eating less beef often argue that producing it hurts the environment. Cattle, we are told, have an outsized ecological footprint: They guzzle water, trample plants and soils, and consume precious grains that should be nourishing hungry humans. Lately, critics have blamed bovine burps, flatulence and even breath for climate change.

As a longtime vegetarian and environmental lawyer, I once bought into these claims. But now, after more than a decade of living and working in the business—my husband, Bill, founded Niman Ranch but left the company in 2007, and we now have a grass-fed beef company—I've come to the opposite view. It isn't just that the alarm over the environmental effects of beef are overstated. It's that raising beef cattle, especially on grass, is an environmental gain for the planet.

Let's start with climate change. According to the Environmental Protection Agency, all of U.S. agriculture accounts for just 8% of our greenhouse emissions, with by far the largest share owing to soil management—that is, crop farming. A Union of Concerned Scientists report concluded that about 2% of U.S. greenhouse gases can be linked to cattle and that good management would diminish

if further. The primary concern is methane, a potent greenhouse gas.

But methane from cattle, now under vigorous study by agricultural colleges around the world, can be mitigated in several ways. Australian research shows that certain nutritional supplements can cut methane from cattle by half. Things as intuitive as good pasture management and as obscure as robust dung beetle populations have all been shown to reduce methane.

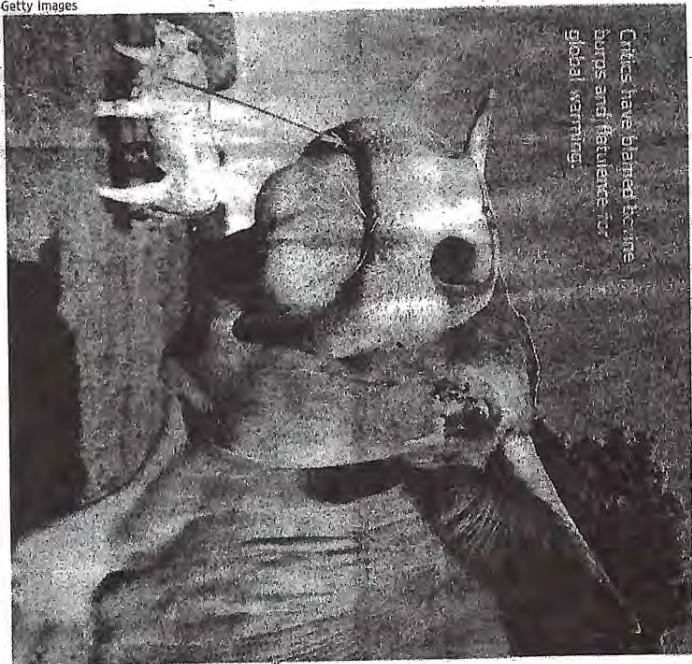
Grasslands for cattle safeguard soil, water and land.

At the same time, cattle are key to the world's most promising strategy to counter global warming: restoring carbon to the soil. One-tenth of all human-caused carbon emissions since 1850 have come from soil, according to ecologist Richard Howarth of the Woods Hole Research Center. This is due to tillage, which releases carbon and

strips the earth of protective vegetation, and to farming practices that fail to return nutrients and organic matter to the earth. Plant-covered land that is never plowed is ideal for recapturing carbon through photosynthesis and for holding it in stable forms.

Most of the world's beef cattle are raised on grass. Their prying mouths stimulate vegetative growth as their trampling hoofs and digestive tracts foster seed germination and nutrient recycling. These beneficial disturbances, like those once caused by wild grazing herds,

Critics have blamed bovine burps and flatulence for global warming.



Getty Images

prevent the encroachment of woody shrubs and are necessary for the functioning of grassland ecosystems.

Research by the Soil Association in the UK shows that if cattle are raised primarily on grass, and if good farming practices are followed, enough carbon could be sequestered to offset the methane emissions of all U.K. beef cattle and half its dairy herd. Similarly, in the US, the Union of Concerned Scientists esti-

mation rates from conventionally tilled agricultural fields average one to two orders of magnitude greater than erosion under native vegetation, such as what's typically found on well-managed grazing lands.

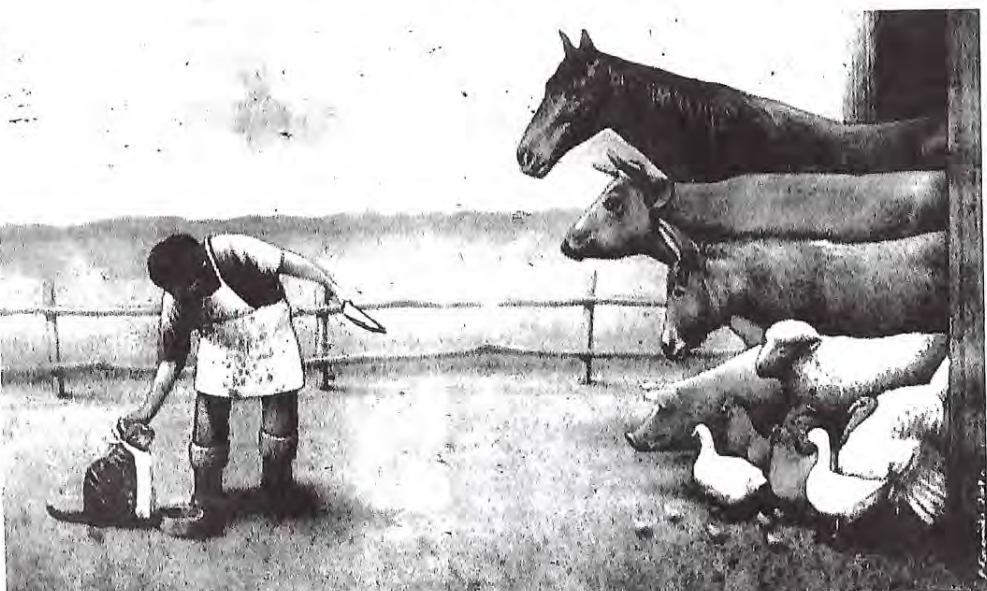
Nor are cattle voracious consumers of water. Some environmental critics of cattle assert that 2,500 gallons of water are required for every pound of beef. But this figure (or the even higher ones often cited by advocates of veganism) are based on the most water-intensive situations. Research at the University of California, Davis, shows that producing a typical pound of U.S. beef takes about 441 gallons of water per pound—only slightly more water than for a pound of rice—and beef is far more nutritious.

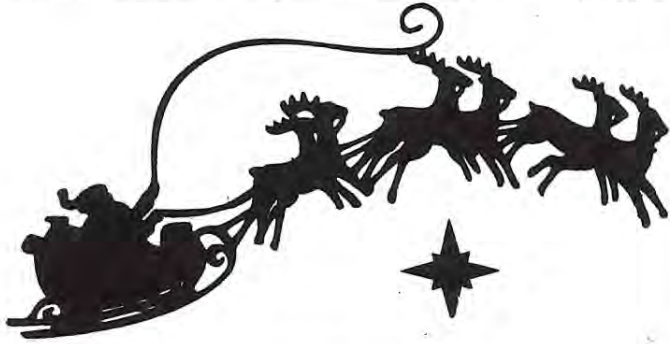
Eating beef also stands accused of aggravating world hunger. This is ironic since a billion of the world's poorest people depend on livestock. Most of the world's cattle live on land that cannot be used for crop cultivation, and in the US, 85% of the land grazed by cattle cannot be farmed, according to the U.S. Beef Board.

The bovine's most striking attribute is that it can live on a simple diet of grass, which it forages for itself. And for protecting land, water, soil and climate, there is nothing better than dense grass. As we consider the long-term prospects for feeding the human race, cattle will rightly remain an essential element.

Ms. Hahn Niman is the author of "Defending Beef: The Case for Sustainable Meat Production" (Chelsea Green), from which this is adapted.

THE WALL STREET JOURNAL.





FOR SALE

IT'S ALL ABOUT BOLINAS- \$5.00- DVD
 (maybe you are in it-4th of July Beach, Plaza etc.)
 contact curlyandgeorges@hotmail.com

CR 12/22

DRY DRY DRY SEASONED FIREWOOD
 Oak, Bay, Eucalyptus - Cut locally
 Gospel Flat Farm 868-0921

SANTA CLAUS IS COMING TO BOLINAS!



LOST AND FOUND

LOST: DOWNTOWN: KEY RING WITH KEYS;
 includes grey key fob. tel: 9648 David

DK 12/17

LOST: SWEET LITTLE LEATHER BABY BOOTY,
 fell off the foot, lost on a walk somewhere between the
 community center and gospel flat, Monday before the storm.
 Any sightings?" VW -9078

VW 12/12

LOST: SET OF KEYS - REWARD FOR THEIR RETURN!!
 Lost on street near garage on Tuesday around 1pm. Big
 computerized car keys on ring with many other keys. Some
 have colored tops (purple, green, and amber) Please call 868-
 1800 or 251-1800. Thank you, Ellen

EH 12/14

MISSING AFTER THANKSGIVING AT THE
 Bolinas Community Center: A small white ceramic pitcher and a
 round tin tray about 14" diameter painted with pastel flowers.
 I'd love to get them back. K.O. 868-2283

KO 12/10

CLASSES

SANDOR'S WONDERFUL CONGOLESE DANCE CLASS
 is on break. Next class - January 8, 6:00 pm-
 New students very welcome.

NB 1/7/15



Weekly Classes and Events Schedule

MONDAY

Bo Babies & Toddlers Open Play Group (free) 10:00 - Noon
 Chiropractic Adjustments w/ Colleen 3:00 - 5:00 p.m.
 Pilates w/Lisa Townsend (pre-register 868-0473) 5:30 - 6:30 p.m.
 Men's Percussion Ensemble w/ M. Pinkham 7:00 - 8:30 p.m.

TUESDAY

Senior Stretch W/Anna Gottreich 11:00 - 12:00 p.m.
 Aerial Arts w/Joanna 3:30 - 6:00 p.m.
 Pirate Pizza (Pre-order at 328-1066) 4:30 - 7:30 p.m.

WEDNESDAY

Pilates w/Lisa Townsend 8:30 - 10:00 a.m.
 After-School Theater w/Lisa T (11/12/14-12/17/14) 3:30 - 5:00 p.m.
 Biblia en Español 8:00 - 9:30 p.m.

THURSDAY

USDA food bank 12 noon
 Aerial Arts w/Joanna 3:30 - 4:45 p.m.
 Congolese Dance w/ Sandor 6:00 - 7:30 p.m.

FRIDAY

Pilates Mat Class w/Lisa Townsend 9:00 - 10:00 a.m.
 No Place Like Home (Free Brunch 4th Fri of Month) 10:30 - 11:30 p.m.

SATURDAY

Diaspora Dance w/Amber Hines 9:00 - 10:15 a.m.
 Ballet w/ Erika Townsend 10:30 - Noon

SUNDAY

Soul Soup w/Amber (0-2 yr) pre-reg. 12/21/14 (1.4 - 2.15.15) 9:00 - 9:25 a.m.
 Soul Soup w/Amber (3-4 yr) pre-reg. 12/21/14 (1.4 - 2.15.15) 9:30 - 9:55 a.m.
 Soul Soup w/Amber (5-7 yr) pre-reg. 12/21/14 (1.4 - 2.15.15) 10:00 - 9:45 a.m.
 Brazilian Dance with Anna 11:00 - 12:15 p.m.

Call 868-2128, check the Library, Marquee, Calendar in BCC
 Foyer or visit www.bocenter.org for more info & special events!



Spirit House Tenders

Only 2 more people needed
to complete the 2015 Team
of Spirit House Caregivers.
Call me if you would like to
take part in this community
project. It's fun and if we get
a full complex of helpers, each
person will only need to do it
every two months

.June McAdams-868-9052



SERVICES

BRUSH TO MEADOW TRANSFORMATION

Heavy-duty tractor. Mowing / backhoe / roto-tiller / disking /
plowing / post-hole drilling. Don Murch -0921

DMX

HANDYMAN: HOME REPAIR, CARPENTRY,
painting, Hauling too! 27 years experience. Local refs.
Steve Hill -2310

SHX

FIREWOOD • HYDRAULIC LOG-SPLITTING • HAULING
Dump Runs, Cow Manure, Recycling, Humane animal removal
- Skunks, Raccoons & Yellow Jackets. Carl Henry 868-1782

CHX

TREE SERVICE

Fine Trimming • Hedges • Removals • Brush Chipping
Insured #676377 Steve Ryan 868-1584

SRX

SMILEY'S

SCHOONER SALOON & HOTEL

- INTERNET ACCESS • CHECK CASHING
- WESTERN UNION • ATM & CREDIT CARDS
- COLOR COPIER (B&W too)

41 Wharf Rd., Bolinas 415-868-1311

CIVIL ENGINEERING

PAUL KROHN, PE
LOCAL BOLINAS
STRUCTURAL: DESIGN/PLANS
CIVIL: SITE MAPPING/IMPROVEMENTS/ROADS
(530) 342-2926

AIRPORT? HOWARD DILLON HAS JOINED THE
Subaru S/W Club-For all Bay area (& beyond?) Destinations
Many local refs. 868-2144

HD X

GONE FOR THE HOLIDAYS?

House/Pet sitter available - long-time Bolinas resident.
Call Jutta at 6862549

JR 12/28

hearsaynews@yahoo.com

Submit articles, ads and drawings by midnight
Sunday, Tuesday or Thursday for publication
the next day.

Or to request a link to the password-protected website
to read online and info on how to subscribe online.

FOR RENT

OCEAN VIEW - 2 ROOMS - SEPARATE BUILDING
\$600 & \$400 per month. Utilities plus Direct TV & Wi-fi. Toilet
& shower in unit, share kitchen & washer/dryer. -0254

MB 12/31

HEALTH AND HEALING

CAREGIVER AVAILABLE

Excellent homcare, cleaner.
Call 868-1782 Anita & William

CH x

June McAdams, RN
Compassionate and Skilled
Hospice Care Home Care
Newborn to Elders
Coastal Marin Only
More than 39 years nursing experience
(415) 868-9052

WANTED

CLOTHES DRYER.

We need to replace our broken electric clothes dryer.
Please call Nancy @ 1680 with any leads.

NH 12/28

WILLIAM HENRY NEEDS A GOOD VEHICLE

operational with a reasonable price. 868-1782 or 233-1015

CHx



KWMR-FM

(90.5 PRS, 89.9 Bolinas, 92.3 The Valley)

Sat Dec 27

2 pm Hawai'i Calling.

8 pm Jazz Groove with Gregory DeMascio.

Sun Dec 28

6 pm Elbow Room. Peruvian musicians Alejandro &
Maria Laura.

8 pm L.A. Theatre Works. "The Lion in Winter" by James
Goldman. King Henry II at Christmas, 1183.

Mon Dec 29

5 pm Epicenter. Dennis McNally, *On Highway 61: Music,
Race and the Evolution of Cultural Freedom.*

6:30 pm Release Me with guest host Declan Katz.

Thu Jan 1

10 am Special: "The Earth is Our Home for the Holidays
and Always."

1 pm Special. "Innovation Hub: Ringing in the Future with
Kara Miller.

Schedules & More Info at www.kwmm.org