

November 30,
2011

INSIDE: Earth's Bounty, Cory's Column, Art

46¢

(50¢ with tax)

THE WEDNESDAY BOLINAS

HEARSAY NEWS



Venessa Waring

WHAT'S HAPPENING?

Wednesday, November 30

SAVE THE STAGE!

Marin Transit Meeting @ the Firehouse; Steve Kinsey will be present. 6-7:30pm

FAMILY CAREGIVER SUPPORT GROUP

Offered by West Marin Services; @ Calvary Presbyterian Church in Bolinas, free, @ 6:30 pm for info contact Beth Carusillo, 917-941-7607

MIDNIGHT ON THE WATER

Acoustic contradance music for Smiley's celebration of all November birthdays, 7:30pm. Free. Free cake, too.

Thursday, December 1

COAST CAFÉ CONCERT SERIES

Bart Hopkin, solo guitar. Food & drink specials @ Coast Café, 7-9pm.

JEFFREY MANSON & GUESTS

New band showcase @ Smiley's, 8:30pm.

Friday, December 2

OPENING CELEBRATION AND BASKET DEMO

Art Show at the Stinson Beach Library; 4-6pm

Saturday, December 3

ZEN MEDITATION

Monthly half-day sitting. Come for all or part. Dharma talk 10:30 am. Potluck lunch to follow. Info: 868-0874

Monday, December 5

HOMEGROWN

Ginny Felch, photographer, in conversation with Joan Hammerman Robbins, Firehouse, 7:30pm

Friday, December 9

WINTER FAIRE

Opening, 5-10pm (also Sat. & Sun.)

Saturday, December 10

SANTA CLAUS

Will be at the Winter Faire, 11am-4:30pm

Elegant COMMUNITY PROPOSAL FOR STAGECOACH REDESIGN on table

UNPRECEDENTED MEETING TONIGHT:
Marin Transit discusses OUR plan--

PLEASE BE THERE...BODIES IN THE ROOM
WILL TRULY MAKE THE DIFFERENCE OF
A SEVEN DAY STAGECOACH TO PT. REYES
FOR OUR YOUTH, OUR ELDERS OUR
PEOPLE.

Plus a recent 1.3 million dollar windfall makes our
chances MUCH greater. Please tell everyone, even if
you don't ride it yourself...Functional and regular
public transportation is good for the community.

FIREHOUSE 6-8PM

THANK-YOU

**HAPPY
HAPPY
BIRTHDAY!!!**

November 28:
Steve Reinertsen

November 29:
Katie Ponder
Alana Smith
Claire Heart
Doug Scoville

November 30:
Brandon Kearney
Freya McCamant
Claire Simeone

December 1:
Charles Whitefield
Charles Fox
Leslie Acoca Goodchild
John Borg
Molly Maguire
Christine Swain
Randi Arnold

December 2:
Susan Goldhaber

December 3:
Loretta Hooper
Carey Leigh Smith-March
Bobby Parrs

December 5:
Amber Rose Funk



CHARLIE DOCHERTY

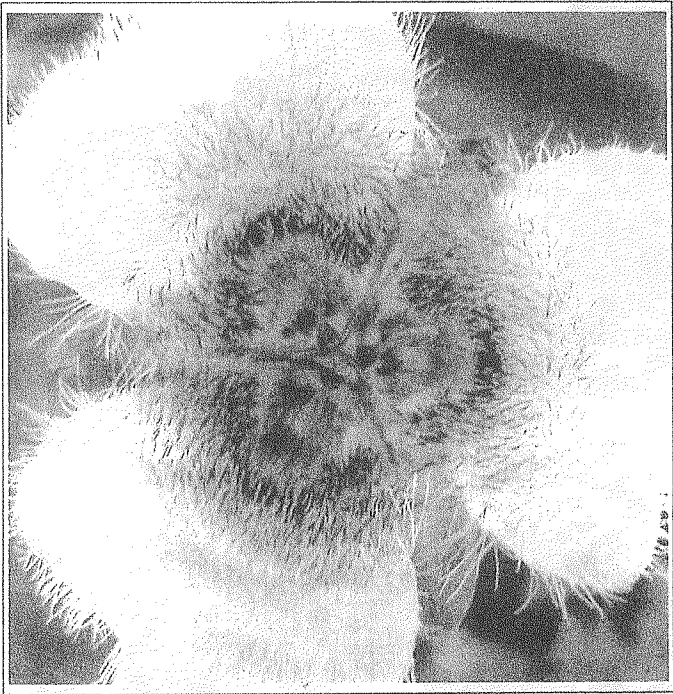
*I have a feeling that my boat
has struck, down there in the depths,
against a great thing.*

*And nothing
happens! Nothing... Silence... Waves...*

*—Nothing happens? Or has everything happened,
and are we standing now, quietly, in the new life?*

— JUAN RAMON JIMINEZ

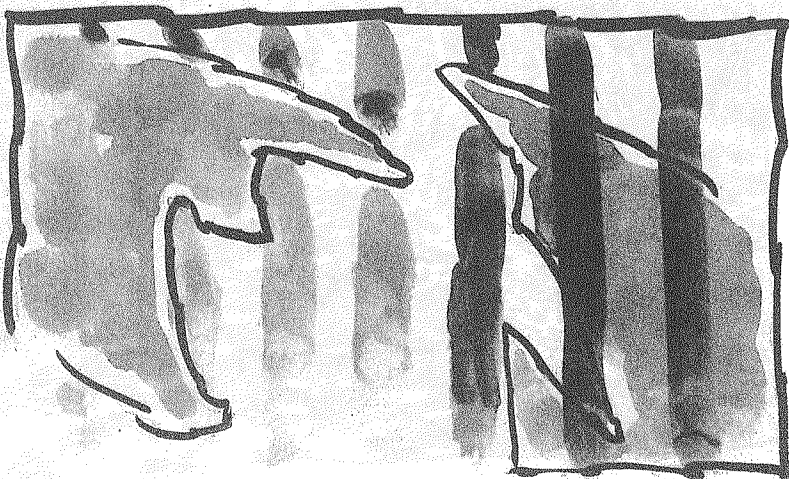
Earth's Bounty



Kathleen O'Neill

Calochortus tolmiei is a species of flowering plant in the lily family known by the common names Tolmie star-tulip and pussy ears. It is native to the west coast of the United States from Washington to California, where it is a common member of the flora in several types of habitat. It is a perennial herb producing a slender stem, branched or unbranched, to 40 centimeters in maximum height (about 4 inches on the cliff, flower an inch at least across). There is a basal leaf up to 40 centimeters long which does not wither at flowering, and generally a smaller leaf farther up the stem. The inflorescence is a solitary bloom or a cluster of bell-shaped flowers. Each has white to pale pink or purple petals, each up to 2.5 centimeters long, and three narrower sepals beneath. The petals are usually very hairy on their inner surfaces, and may be fringed with long hairs as well. The fruit is a winged capsule 2 or 3 centimeters long containing several dark brown seeds.

It blooms on the cliff by Commonweal's meditation shack.



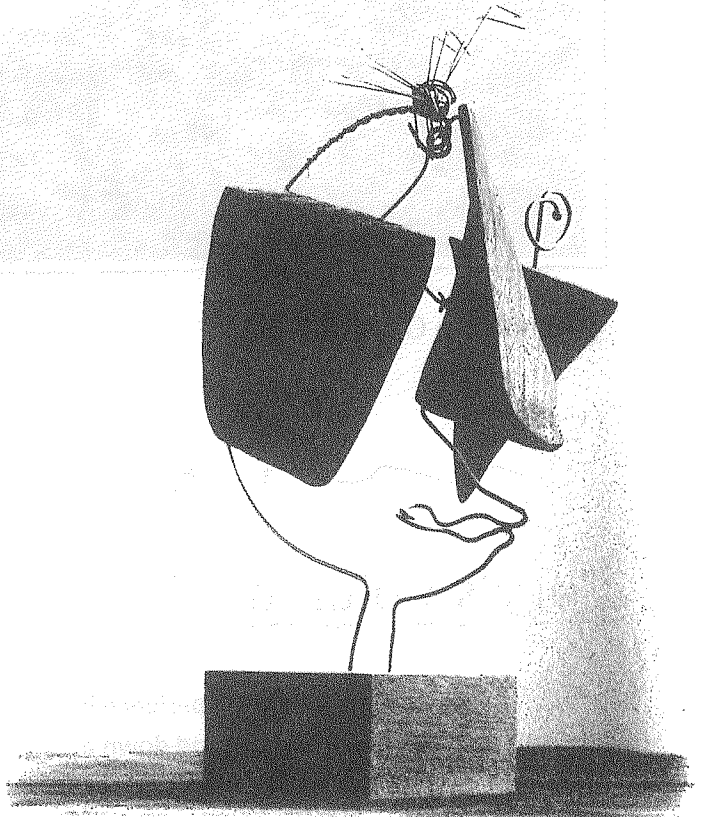
It's All About Inequality

21

30 REASONS TO COME TO MY 30TH BIRTHDAY

- 1: TERRACE SHOULD BE OPEN
- 2: FISH NETS
- 3: NIGHT SKY (HAVE YOU SEEN THOSE STARS?)
- 4: FRIENDS
- 5: CELEBRATION!
- 6: LADY GAGA
- 7: LIPSTICK
- 8: BEAUTIFUL WOMEN
- 9: HOT DUDES
- 10: TOASTS GALORE
- 11: BURT REYNOLDS RSVP YES!
- 12: BRIDGET & BRENDA'S HEADSTAND
- 13: CAKE AT EIGHT
- 14: SARAH'S DANCE MOVES
- 15: CHARLIE DOCHERTY
- 16: BURN CALORIES
- 17: GO LOCAL
- 18: BUBBLY WATER
- 19: MERCY
- 20: TERRACE SHOULD BE OPEN!!!
- 21: JUST FRIENDS
- 22: BEER
- 23: YOUR FRIENDS MIGHT NEED A RIDE HOME
- 24: LATE NIGHT BEACH WALKS
- 25: FUN!!!
- 26: JIM, JEROME & RB
- 27: KATY PERRY
- 28: GET WARM
- 29: HUMAN PYRAMID
- 30: COMING TOGETHER

SATURDAY, DEC 3RD *** SMILEY'S 8 PM
MOLLY MAGUIRE'S 30TH BDAY BASH



2 more days

ZAKAS

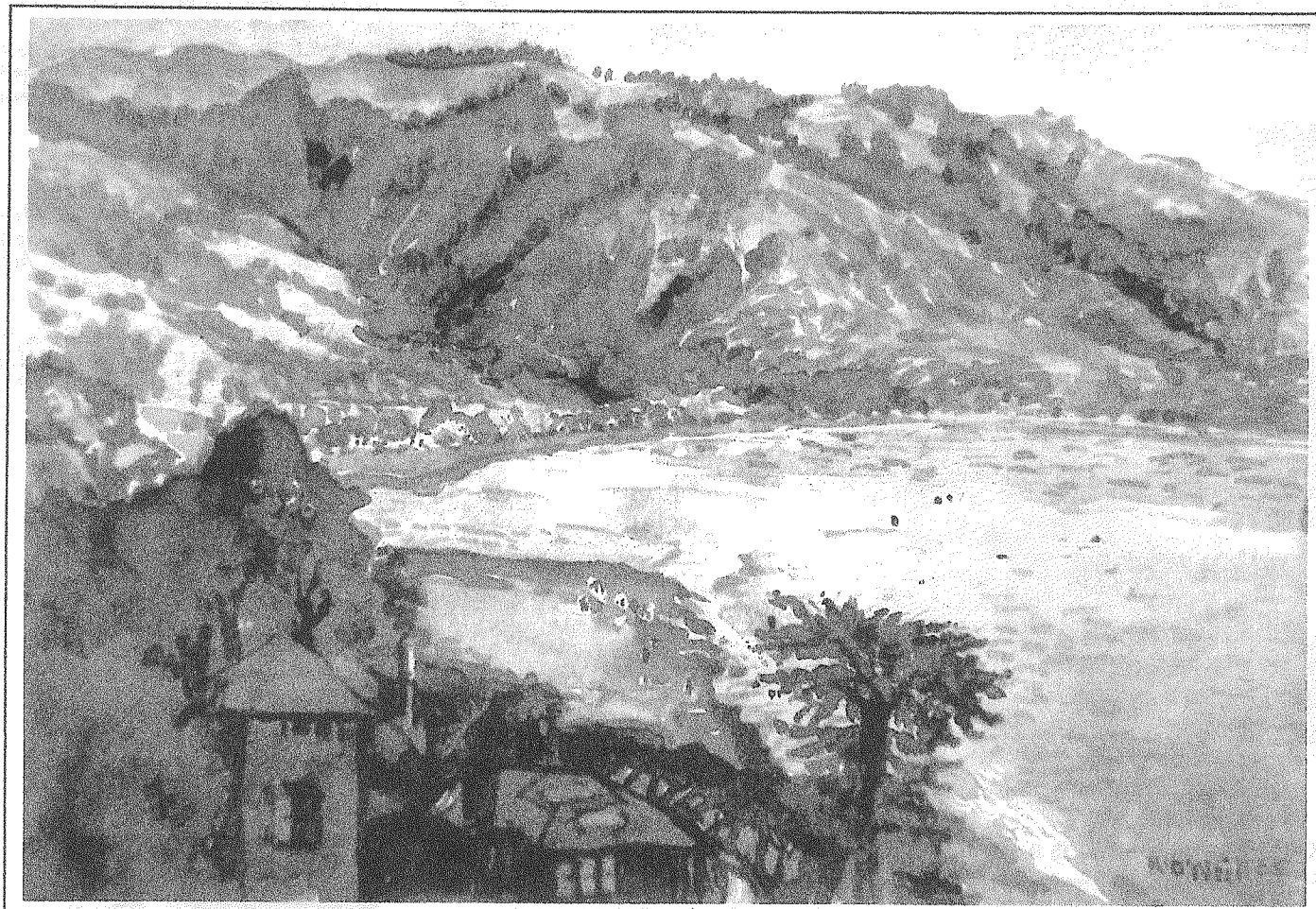
in the library

Bikeavore
BIKE REPAIR Bolinas, CA

SCOTT DUNN

(415) 233-2471
bikeavore@att.net

www.bikeavore.com



Kathleen O'Neill

watercolor

painted from Ocean Avenue.

Cory's Column

The train to Portland is a musical experience in which hills and mountains play up and down a visual scale. Just as pleasure in a work of music comes from aesthetically pleasing juxtaposition of notes, the structure of a long journey consists of arrangements of terrain. The mind picks out patterns and builds a symphony of experience, lonely like all experience in that only you and I know what was heard, or ever will.

I overheard Jerry Bojeste telling someone that communicating who you are to another human being is the highest pursuit in life. This goal appears unattainable to me. The communication of eternal ideas seems to be an attractive alternative and the goal of many great works; of course what makes an idea eternal is it's commonality across human beings. You might then say the highest form of creative expression is to point out what we have in common.

- Cory Griffith

Thank You from Bo Gas

To thank the community for its generous support, Bo Gas is offering a holiday promotion.

Come into Bo Gas during attendant hours, spend \$20 on gas. And while we fill your tank, we will buy you a cup of coffee at Bobolious.

Thank you, hope to see you down here.

- Al B Foreman



This

"The blue mountains are constantly walking."

Dōgen is quoting the Chan master Furong. Dōgen was probably envisioning those mountains of Asia whose trails he had walked over the years—peaks in the three to nine-thousand-foot range, hazy blue or blue-green, mostly tree-covered, maybe the steep jumbled mountains of coastal South China where he had lived and practiced thirteen years earlier. (Timberline at these latitudes is close to nine thousand feet—none of these are alpine mountains.) He had walked thousands of miles. ("The Mind studies the way running barefoot.")

If you doubt mountains walking you do not know your own walking.

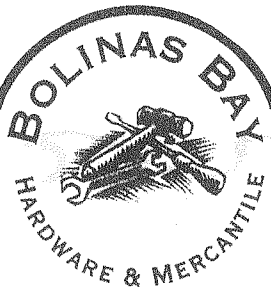
Dōgen is not concerned with "sacred mountains"—or pilgrimages, or spirit allies, or wilderness as some special quality. His mountains and streams are the processes of this earth, all of existence, process, essence, action, absence; they roll being and nonbeing together. They are what we are, we are what they are. For those who would see directly into essential nature, the idea of the sacred is a delusion and an obstruction: it diverts us from seeing what is before our eyes: plain thusness. Roots, stems, and branches are all equally scratchy. No hierarchy, no equality. No occult and exoteric, no gifted kids and slow achievers. No wild and tame, no bound or free, no natural and artificial. Each totally its own frail self. Even though connected all which ways; even *because* connected all which ways.

This, *thusness*, is the nature of the nature of nature. The wild in wild.

So the blue mountains walk to the kitchen and back to the shop, to the desk, to the stove. We sit on the park bench and let the wind and rain drench us. The blue mountains walk out to put another coin in the parking meter, and go on down to the 7-Eleven. The blue mountains march out of the sea, shoulder the sky for a while, and slip back into the waters.

excerpted from THE PRACTICE OF THE WILD

Essays by
Gary Snyder



TREE HUGGERS

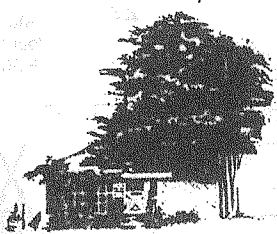
Find Your Special Tree at
Bolinas Bay Hardware & Mercantile!
Come Early for Holiday Treats and
a Great Selection of Toys & Gifts

Featuring valspar paint

OPEN WEEKDAYS 8-5:30 | WEEKENDS 9-5
OLEMA-BOLINAS ROAD | BOLINAS | 415.868.2900
WWW.BOLINASBAYHARDWARE.COM

MIGUEL
BUSTAMANTE
DENTAL
CORPORATION

24 WHARF RD. BOLINAS
415 868 0911



I want to thank all of you for being my friends and family.

- Una Zakas



BARBARY COAST BISTRO'S PIRATE PIZZA NIGHT
@ BOLINAS COMMUNITY CENTER 11/29

pictured Jon, Lia and Mickela Sabbatini with Jeff Manson

LIVE MUSIC AT THE BEACH

Fri., Sat. & Sun Nites DECEMBER

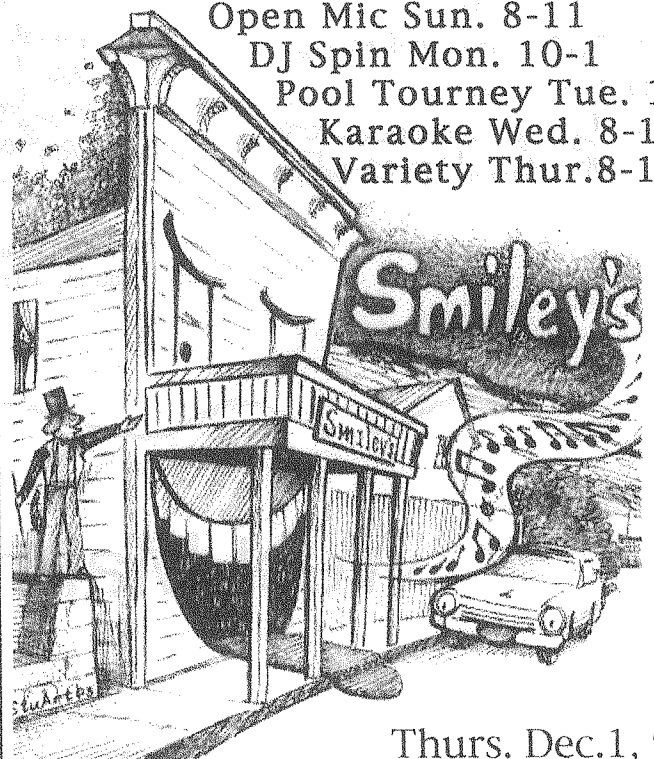
Open Mic Sun. 8-11

DJ Spin Mon. 10-1

Pool Tourney Tue. 11

Karaoke Wed. 8-11

Variety Thur. 8-11



Thurs. Dec. 1, 9-1,
JEFFREY MASON

Fri. Dec. 2, 9-1, country blues,
THE DIRTY HAND FAMILY BAND

Sat. December 3, JUST FRIENDS
w/Molly Maguire's birthday

Sun. Dec. 4 OPEN MIC w/Diana

Mon. Dec. 5, 8-12, reggae, spin,

Monday Night Live

Wed. Dec. 7, 8-12 LARRY'S KARAOKE

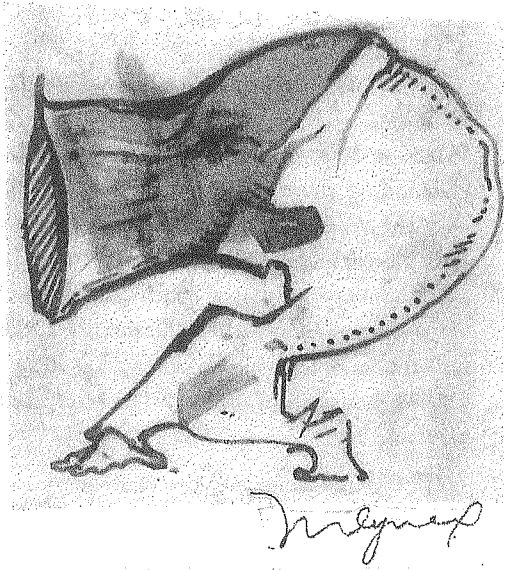
Thur. Dec. 8, 8-12, alt. rock
COURTNEY JANES

SMILEY'S SCHOONER SALOON & HOTEL
41 Wharf Road, Bolinas 415-868-1311

Sarah's ideal Village

- * no cars
- * local food
- * gardens everywhere
- * trains to major cities from our village
- * no money, everything is trade
- * lots of healthy bees
- * Very diverse population
- * everyone knows everyone and helps each other
- * Communal living
- * Farmers market 2 weekly
- * Lots of dancing art & music
- * Land is accessible for land projects

- * anyone who wants to do a land project which adds to community is honored and given land
- * kids are celebrated
- * inter-generational gatherings, mentoring
- * homes are natural buildings
- * no plastic
- * people talk about emotions openly and have support when needed
- * nobody goes hungry and health care is free
- * everything is shared and heated pool



This Week @ The Dance Palace

415-663-1075


Tickets at: www.dancepalace.org

40TH ANNUAL DANCE PALACE HOLIDAY CRAFTS FAIR  
More than 40 craftspeople from all over the Bay Area will display their wares, including jewelry, pottery, clothing, toys, weaving, Christmas ornaments, and more. Visitors to the fair can buy all their holiday gifts, and enjoy an exciting assortment of delicious homemade foods by Indian Peach Food Company, including fresh soups, sandwiches, salads, and desserts.
Friday, December 2, 4:00–9:00 p.m.; Saturday December 3 10:00 a.m.–6:00 p.m., and Sunday December 4, 10:00 a.m.–5:00 p.m. / Free

POINT REYES SENIOR CLUB ANNUAL CHRISTMAS LUNCHEON
Thursday, December 8, noon

Culled from Sarah Hampton during a Transition Bo-Stin meeting

West Marin Free Skool

				DEC	1	2	3
4 Joy of Running 9am	5 Mastering Money 7:30- 9pm	6	7 Kraut 7pm	8	9 Knit & Craft Project Swap 6:30-8pm	10 Partnership: Political & Personal 11am-3pm	
11 Joy of Running 9am Choose Your ADVENTURE 2pm	12 Mastering Money 7:30-9pm	13 Science of Good Health 6:30-8 pm Big YES! Dance Party 8-10pm	14 Women's Journaling Circle: Values 7:00-8:30pm	15	16	17	
18 Joy of Running 9am	19 Mastering Money 7:30-9pm	20	21 BEADING 4pm Film Night w/ Transition WM 6:30-8:30pm	22	23 Mapping Your MOON 6:30-8pm	24	
25 Joy of Running 9am	26 Mastering Money 7:30-9pm	27	28	29	30 	31	





HEARSAY NEWS CLASSIFIEDS

To place an ad: come to the office, 270 Elm at Maple, on the left side of BPUD building. Ad forms are in a small mailbox next to door. Fill out form and drop in door slot. If you have included payment please note. Office hours: Monday, Wednesday and Friday between 9:00 & 11:00 am. Call 868-0138 for more info.

FOR SALE

1984 DUMP TRUCK FOR SALE

Needs Work - As Is \$500 OBO. Deadline for offers 11/30/11
Call or stop by BCPUD Office 270 Elm Road

11/30

For Announcements Sect.

Zen Meditation

Sat. Dec. 3 9:12:30pm

Monthly half-day sitting

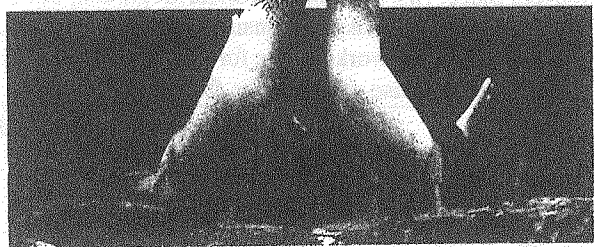
Come for all or part

Dharma talk 10:30

Pothuck Lunch to follow.

Thank You, Patty Bradford

868-0874



© Tui De Roy/Minden Pictures WFE155

LOST & FOUND

FOUND: FLOPPY CLOTH SUNHAT, LAST WEEK

On Bolinas Olema roadside.. Call Martine -9036

11/23

FOUND: DUSTY-PINK FLUFFY JACKET

Call 868-2006 to claim

EH 11/16

LOST: MY SILVER FAKE FUR HAT

at the Bolinas Community Center or Coast Café or somewhere in between. Patrice 868-2758

LB 11/25

MISSING: Children's Outerwear

navy/teal reversible down vest (size 6); red toddler jacket, red check inside (size 2). Please call or text-415-747-4088 if found.

CC 11/14

LOST A SET OF KEYS DOWNTOWN

this past Tuesday PM. If found please call -2405

J 10/28

Leather-bound journal found

It has some water damage "Operation Bloodhound"- this last week on beach below Palomarin Trailhead. Please call Steve @ 415-9022434 to identify/claim.

SH 10/17

Hat Found

"Skipper Hat"- Call Howard to describe
8682144

HD 10/17

ANNOUNCEMENTS

WANTED!!!

**ARTISTS
CRAFTSPEOPLE
IMPORTERS**

~ To participate in the 21st annual
BOLINAS WORLD CRAFTS FAIRE
December 17 & 18
Contact flower sierra

415-669-7041

FS 12/8

hearsaynews@yahoo.com

Submit articles and drawings by midnight for publication the next day. Request a link to the password-protected website. Thank you.

-- Michael Rafferty, Online Editor

CLASSES

DON'T MISS WHAT'S GOING ON AT THE NEW SCHOOL AT COMMONWEAL!

sign-up free at the newschool@commonweal.org. Download past podcasts at www.commonweal.org/new-school/events.html

NSx



Class Schedule

Sunday

Yoga w/Trishna 9:00 - 11:00 a.m.

Jujitsu w/Julian 7:00 - 8:30 p.m.

Monday

Pilates w/Lisa (pre-register 868-0473) 5:30 - 6:30 p.m.

Tuesday

Yoga w/Trishna 9:30 - 11:00 a.m.

Arial Arts for kids w/ Joanna 3:30 - 6:00 p.m.

(Info 868-8821)

Zumba - Latin Dance Fitness w/Diane 6:30 - 8:30 p.m.

Wednesday

Pilates w/Lisa 8:30 - 10:00 a.m.

QiGong for Aching Joints w/Tania 10:30 - 11:30 a.m.

Yoga Basics w/Trishna 5:00 - 6:15 p.m.

Biblia en Español 8:00 - 9:30 p.m.

Thursday

USDA food bank 12:00 noon

Congolese Arts w/Sandor 6:00 - 8:30 p.m.

Friday

Pilates Mat Class w/Lisa 6:00-7:30 p.m.

Saturday

Yoga w/ Lisa Brendel 9:00- 10:30a.m.

Children's Movement w/ Lisa 11:00 - 11:45 a.m.
(info 868-0473)

Check the marqué by the Library for special events at the Community Center. For Info. 868-2128 or Bocenter.org

SERVICES

SMILEY'S

SCHOONER SALOON & HOTEL

- INTERNET ACCESS • CHECK CASHING
- WESTERN UNION • ATM & CREDIT CARDS
- COLOR COPIER (B&W too)

41 Wharf Rd., Bolinas 415-868-1311

HANDYMAN: Carpentry, painting, home repair,
Hauling too! 27 years experience. Local refs.
Steve Hill -2310

SHx

FIREWOOD-HYDRAULIC LOG-SPLITTING-HAULING-
Dump Runs-Cow Manure-Recycling-Humane Animal Removal-
Skunks-Raccoons & Yellow Jacket. Carl Henry 868-1782

CH1/3/12

BRUSH TO MEADOW TRANSFORMATION.

Heavy duty tractor mowing/backhoe/roto-tiller/post-hole
drilling/discing/plowing. Don Murch -0921

DMx

TREE REMOVAL & TREE TRIMMING

Professional and economical. Call 868-1098

CA 12/16

Community Mediation Board

868-0493

Involved in a conflict?

We have trained mediators.

Free, Confidential, Effective

x

AIRPORT? Howard Dillon's fast, comfortable,

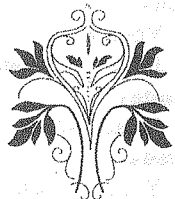
car for all BAY AREA pick-ups, early or late.

Many satisfied local refs. Phone 868-2144

HDx

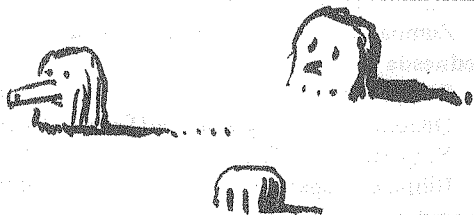
Bilgart Design

Interior design
Kitchens
Baths



Paulette Bilgart
415 868 0108

bilgarddesign.com



The Illusion of
Space

making small spaces feel

BIG

architectural renovation
design consultation ... ZAKAS ...868.8818

HEALTH & HEALING

June McAdams, RN

Compassionate and Skilled

Hospice Care Home Care

Newborn to Elders

Coastal Marin Only

More than 39 years nursing experience

(415) 868-9052



**TAI CHI: HARMONY
IN THE ART OF LIFE**

- Balance Polarities
- Personal Instruction

www.TaiChiNature.us

CA 10/30

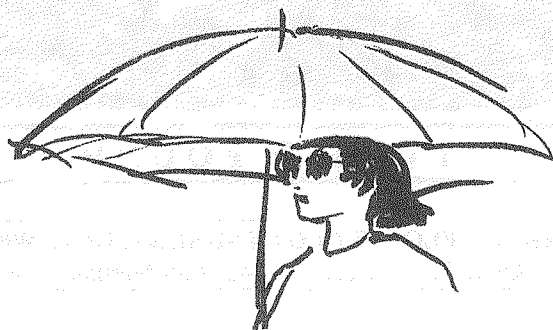
415-669-9720



HOUSING WANTED

WE ARE LONG-TIME BOLINAS RESIDENTS LOOKING
for a two-bedroom house in town. We want to foster children but
our current place, two bedrooms, wonderful garden, but divided
into two buildings making it unsuitable. Possible swap...
perhaps our place works better for you and vice versa...
Any leads please call Jennifer & Martin 868-9236

MB 11/2



72C

ARTICLES FOR HEARSAY NEWS

Articles should be 3 1/2 inches wide
and signed with **FIRST & LAST NAME.**

Thank you, The Editors

NEEDED

MOVING BOXES from 1 sq ft to around 24", square and
rectangular. -8818

UZ 12/2

Una Zakas, editor
June McAdams, ads
David Cattell, printer

RIDE SHARE

MOVING TO PORTLAND DEC. 8
Looking for rider & help driving truck. Una -8818

UZx

WEST MARIN SENIOR SERVICES

has a new volunteer driver program.

Please call Chloe Cook, at 663-8148 ext. 114 to sign up.

x